



DUESSEL-STAPLER

DUESSEL-STAPLER Helmuth Poensgen/strong>
Owner: Helmuth Poensgen
An der Leimkuhle 19
40625 Dusseldorf
Germany

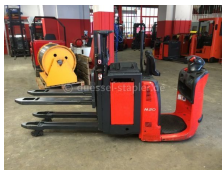
Phone: +49 1522 9858711
Fax: +49 211 54 47 35 92

Email: info@duessel-stapler.de
Internet: duessel-stapler.de

Linde - N20LI

Preis auf
Anfrage

Offer Nr.:	HPA0258
Manufacturer:	Linde
Model:	N20LI
YoC:	2010
Seriennr.:	... A01614
Operating Hours ^h :	4,081 h
Lifting capacity:	1,200 kg
Lifting height:	1,770 mm
Construction height:	1,240 mm
Forks:	Länge 1150 mm
Engine type:	Electric
Type of construction:	High-lift pallet truck
Mast type:	Standard
Additional equipment:	Initial lift
Technical Condition:	good
Condition (visual):	good
UVV (Technical Inspection):	new
Tyres:	Polyurethane
Battery:	Bj 2010 24 Volt 620 Ah
Dead weight:	1,495 kg



Nenn Tragfähigkeit Stützfüße 2000 kg

Ready to use. Shipping can be arranged at your request. Sold as seen without any warranty. Please make an arrangement for evaluation prior to order.

* All prices are quoted net of the statutory value-added tax from our warehouse in Duesseldorf, if not described otherwise. Errors and omissions excepted. All items subject to prior sale. Offer and sales exclusively to business customers as set forth in § 14 BGB.

(^h) Operating hours quoted as read from the counters, errors excepted.

Date printed: 11.05.2025