



# DUESSEL-STAPLER

**DUESSEL-STAPLER Helmuth Poensgen e.K.**

Owner: Helmuth Poensgen  
An der Leimkuhle 19  
40625 Dusseldorf  
Germany

**Phone:** +49 211 9132 5860

**Fax:** +49 211 54 47 35 92

**Email:** info@duessel-stapler.de

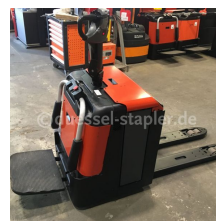
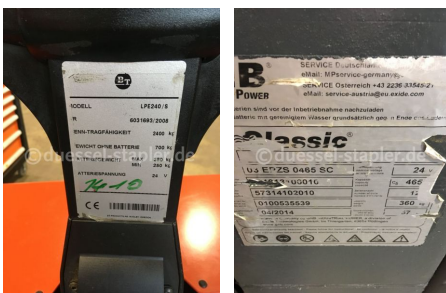
**Internet:** duessel-stapler.de

## BT - LPE240/S - Batterie Bj. 2014

**Price: € 3,200.00 \***

Statutory VAT (16 %) to be added

<b>Offer Nr.:</b>	HPE0199
<b>Manufacturer:</b>	BT
<b>Model:</b>	LPE240/S
<b>YoC:</b>	2008
<b>Operating Hours<sup>h</sup>:</b>	6,474 h
<b>Lifting capacity:</b>	2,400 kg
<b>Construction height:</b>	1,550 mm
<b>Forks:</b>	Länge 1.150 mm
<b>Engine type:</b>	Electric
<b>Type of construction:</b>	Pallet truck
<b>Mast type:</b>	None
<b>Additional equipment:</b>	Platform - foldable
<b>Technical Condition:</b>	good
<b>Condition (visual):</b>	like new
<b>UVV (Technical Inspection):</b>	current
<b>Tyres:</b>	Polyurethane
<b>Battery:</b>	Bj. 2014 24 Volt 445 Ah
<b>Dead weight:</b>	995 kg



Ready to use. Shipping can be arranged at your request. Sold as seen without any warranty. Please make an arrangement for evaluation prior to order.

\* All prices are quoted net of the statutory value-added tax from our warehouse in Duesseldorf, if not described otherwise.

Errors and omissions excepted. All items subject to prior sale. Offer and sales exclusively to business customers as set forth in § 14 BGB.

(<sup>h</sup>) Operating hours quoted as read from the counters, errors excepted.

Date printed: 02.12.2020