



DUESSEL-STAPLER Helmuth Poensgen/strong>
Owner: Helmuth Poensgen
An der Leimkuhle 19
40625 Dusseldorf
Germany

DUESSEL-STAPLER

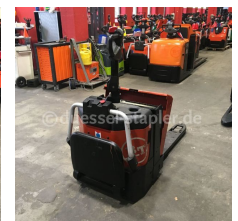
Phone: +49 1522 9858711
Fax: +49 211 54 47 35 92

Email: info@duessel-stapler.de
Internet: duessel-stapler.de

BT - LPE 200/8

Preis auf
Anfrage

Offer Nr.:	HPE0310
Manufacturer:	BT
Model:	LPE 200/8
YoC:	2008
Serienr.:	... 051450
Operating Hours^h:	3,688 h
Lifting capacity:	2,000 kg
Construction height:	1,550 mm
Forks:	Länge 1.150 mm
Engine type:	Electric
Type of construction:	Pallet truck
Mast type:	None
Additional equipment:	Platform - foldable
Technical Condition:	excellent
Condition (visual):	good
UVV (Technical Inspection):	current
Tyres:	Polyurethane
Battery:	Bj. 2014 24 Volt 180 Ah
Dead weight:	665 kg



Ready to use. Shipping can be arranged at your request. Sold as seen without any warranty. Please make an arrangement for evaluation prior to order.

* All prices are quoted net of the statutory value-added tax from our warehouse in Duesseldorf, if not described otherwise. Errors and omissions excepted. All items subject to prior sale. Offer and sales exclusively to business customers as set forth in § 14 BGB.

(^h) Operating hours quoted as read from the counters, errors excepted.

Date printed: 17.04.2026