



DUESSEL-STAPLER

DUESSEL-STAPLER Helmuth Poensgen e.K.

Owner: Helmuth Poensgen
An der Leimkuhle 19
40625 Dusseldorf
Germany

Phone: +49 211 9132 5860

Fax: +49 211 54 47 35 92

Email: info@duessel-stapler.de

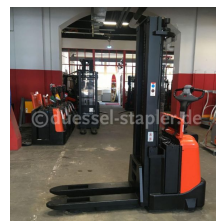
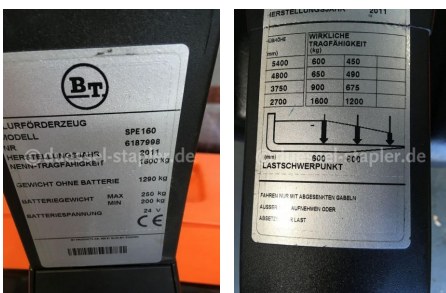
Internet: duessel-stapler.de

BT - SPE 160

Price: € 7,490.00 *

Statutory VAT (19 %) to be added

Offer Nr.:	HPG0281
Manufacturer:	BT
Model:	SPE 160
YoC:	2011
Seriennr.:	... 187998
Operating Hours^h:	2,352 h
Lifting capacity:	1,600 kg
Lifting height:	5,400 mm
Free lift:	1,840 mm
Construction height:	2,380 mm
Forks:	Länge 1.150 mm
Engine type:	Electric
Type of construction:	High-lift pallet truck
Mast type:	Triplex
Technical Condition:	excellent
Condition (visual):	excellent
UVV (Technical Inspection):	current
Tyres:	Polyurethane
Battery:	Bj. 2011 24 Volt 258 Ah



Ready to use. Shipping can be arranged at your request. Sold as seen without any warranty. Please make an arrangement for evaluation prior to order.

* All prices are quoted net of the statutory value-added tax from our warehouse in Dusseldorf, if not described otherwise. Errors and omissions excepted. All items subject to prior sale. Offer and sales exclusively to business customers as set forth in § 14 BGB.

(^h) Operating hours quoted as read from the counters, errors excepted.

Date printed: 06.10.2022