



DUESSEL-STAPLER

DUESSEL-STAPLER Helmuth Poensgen/strong>
Owner: Helmuth Poensgen
An der Leimkuhle 19
40625 Dusseldorf
Germany

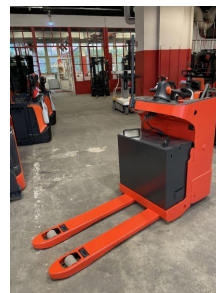
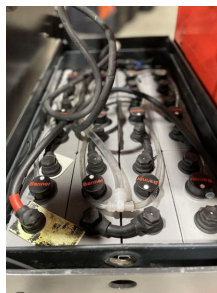
Phone: +49 1522 9858711
Fax: +49 211 54 47 35 92

Email: info@duessel-stapler.de
Internet: duessel-stapler.de

Linde - T20SF

Preis auf
Anfrage

Offer Nr.:	HPK0061
Manufacturer:	Linde
Model:	T20SF
YoC:	2015
Seriennr.:	... 4F0062
Operating Hours^h:	6,279 h
Lifting capacity:	2,000 kg
Construction height:	1,750 mm
Forks:	Länge 1.150 mm
Engine type:	Electric
Type of construction:	Seated LLP truck
Mast type:	None
Technical Condition:	good
Condition (visual):	excellent
UVV (Technical Inspection):	current
Tyres:	Polyurethane
Battery:	Bj. 2015 24 Volt 425 Ah
Dead weight:	1,025 kg



Ready to use. Shipping can be arranged at your request. Sold as seen without any warranty. Please make an arrangement for evaluation prior to order.

* All prices are quoted net of the statutory value-added tax from our warehouse in Dusseldorf, if not described otherwise. Errors and omissions excepted. All items subject to prior sale. Offer and sales exclusively to business customers as set forth in § 14 BGB.

(^h) Operating hours quoted as read from the counters, errors excepted.

Date printed: 27.04.2026