



# DUESSEL-STAPLER

DUESSEL-STAPLER Helmuth Poensgen/strong>  
Owner: Helmuth Poensgen  
An der Leimkuhle 19  
40625 Dusseldorf  
Germany

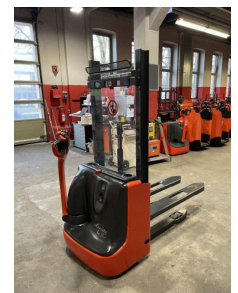
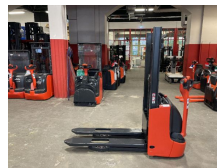
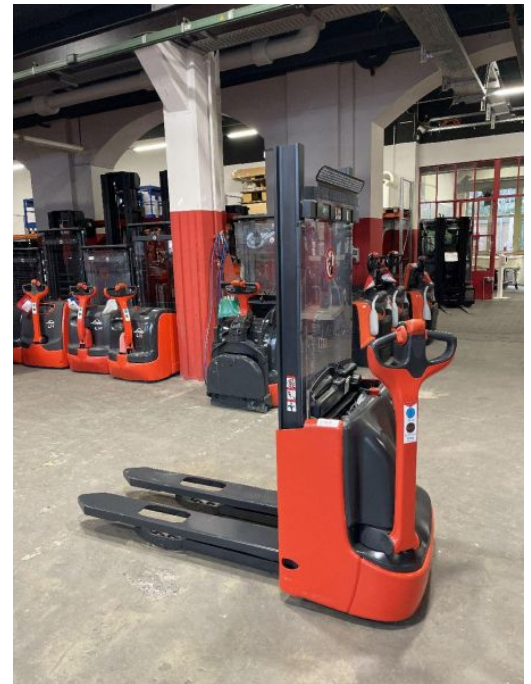
Phone: +49 1522 9858711  
Fax: +49 211 54 47 35 92

Email: [info@duessel-stapler.de](mailto:info@duessel-stapler.de)  
Internet: [duessel-stapler.de](http://duessel-stapler.de)

## Linde - L10 - !! Gabel Länge 1.350 mm !!

Preis auf  
Anfrage

Offer Nr.:	HPK0084
Manufacturer:	Linde
Model:	L10
YoC:	2014
Serienr.:	... E03851
Operating Hours <sup>h</sup> :	817 h
Lifting capacity:	1,000 kg
Lifting height:	1,550 mm
Construction height:	1,970 mm
Forks:	Länge !!!!! 1.350 !!!!
Engine type:	Electric
Type of construction:	High-lift pallet truck
Mast type:	Standard
Additional equipment:	Integrated charger
Technical Condition:	excellent
Condition (visual):	good
UVV (Technical Inspection):	current
Tyres:	Polyurethane
Battery:	Bj. 2014 24 Volt 200 Ah
Dead weight:	715 kg



Ready to use. Shipping can be arranged at your request. Sold as seen without any warranty. Please make an arrangement for evaluation prior to order.

\* All prices are quoted net of the statutory value-added tax from our warehouse in Duesseldorf, if not described otherwise. Errors and omissions excepted. All items subject to prior sale. Offer and sales exclusively to business customers as set forth in § 14 BGB.

(<sup>h</sup>) Operating hours quoted as read from the counters, errors excepted.

Date printed: 08.12.2025