



DUESSEL-STAPLER

DUESSEL-STAPLER Helmuth Poensgen/strong>
Owner: Helmuth Poensgen
An der Leimkuhle 19
40625 Dusseldorf
Germany

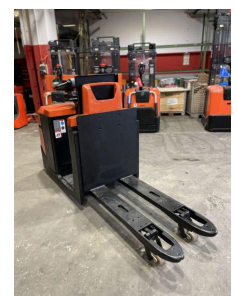
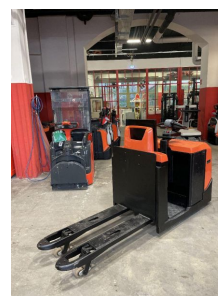
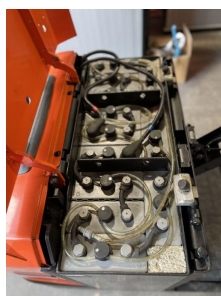
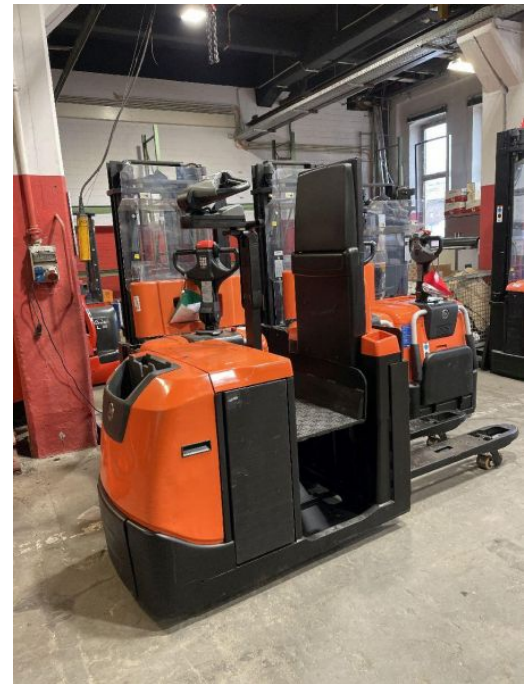
Phone: +49 1522 9858711
Fax: +49 211 54 47 35 92

Email: info@duessel-stapler.de
Internet: duessel-stapler.de

BT - OSE 250 P - Plattform u Fahrer HH 1.000mm

Preis auf
Anfrage

Offer Nr.:	HPK0104
Manufacturer:	BT
Model:	OSE 250 P
YoC:	2012
Serienr.:	... 200940
Operating Hours^h:	5,384 h
Lifting capacity:	2,500 kg
Construction height:	1,650 mm
Forks:	Länge 1.150 mm
Engine type:	Electric
Type of construction:	Pallet truck
Mast type:	None
Technical Condition:	good
Condition (visual):	excellent
UVV (Technical Inspection):	new
Tyres:	Polyurethane
Battery:	Bj. 2012 24 Volt 425 Ah
Dead weight:	1,450 kg



Ready to use. Shipping can be arranged at your request. Sold as seen without any warranty. Please make an arrangement for evaluation prior to order.

* All prices are quoted net of the statutory value-added tax from our warehouse in Dusseldorf, if not described otherwise. Errors and omissions excepted. All items subject to prior sale. Offer and sales exclusively to business customers as set forth in § 14 BGB.

(^h) Operating hours quoted as read from the counters, errors excepted.

Date printed: 01.05.2026