



# DUESSEL-STAPLER

DUESSEL-STAPLER Helmuth Poensgen/strong>  
Owner: Helmuth Poensgen  
An der Leimkuhle 19  
40625 Dusseldorf  
Germany

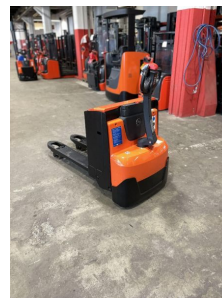
Phone: +49 1522 9858711  
Fax: +49 211 54 47 35 92

Email: [info@duessel-stapler.de](mailto:info@duessel-stapler.de)  
Internet: [duessel-stapler.de](http://duessel-stapler.de)

## BT - LWE 200

Preis auf  
Anfrage

<b>Offer Nr.:</b>	HPK02430
<b>Manufacturer:</b>	BT
<b>Model:</b>	LWE 200
<b>YoC:</b>	2014
<b>Seriennr.:</b>	... 290442
<b>Operating Hours<sup>h</sup>:</b>	3,493 h
<b>Lifting capacity:</b>	2,000 kg
<b>Construction height:</b>	1,750 mm
<b>Forks:</b>	Länge 1.200 mm
<b>Engine type:</b>	Electric
<b>Type of construction:</b>	Pallet truck
<b>Mast type:</b>	None
<b>Technical Condition:</b>	excellent
<b>Condition (visual):</b>	good
<b>UVV (Technical Inspection):</b>	current
<b>Tyres:</b>	Polyurethane
<b>Battery:</b>	BJ. 2014 24 Volt 300 Ah
<b>Dead weight:</b>	595 kg



Ready to use. Shipping can be arranged at your request. Sold as seen without any warranty. Please make an arrangement for evaluation prior to order.

\* All prices are quoted net of the statutory value-added tax from our warehouse in Duesseldorf, if not described otherwise. Errors and omissions excepted. All items subject to prior sale. Offer and sales exclusively to business customers as set forth in § 14 BGB.

(<sup>h</sup>) Operating hours quoted as read from the counters, errors excepted.

Date printed: 25.04.2026