



DUESSEL-STAPLER

DUESSEL-STAPLER Helmuth Poensgen/strong>
Owner: Helmuth Poensgen
An der Leimkuhle 19
40625 Dusseldorf
Germany

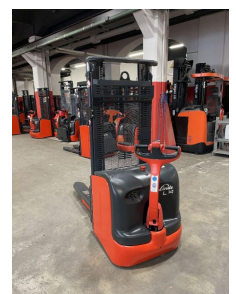
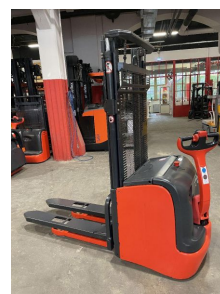
Phone: +49 1522 9858711
Fax: +49 211 54 47 35 92

Email: info@duessel-stapler.de
Internet: duessel-stapler.de

Linde - L14

Preis auf
Anfrage

Offer Nr.:	HPK0306
Manufacturer:	Linde
Model:	L14
YoC:	2012
Seriennr.:	... C04633
Operating Hours ^h :	2,397 h
Lifting capacity:	1,400 kg
Lifting height:	2,930 mm
Construction height:	1,950 mm
Forks:	Länge 1.250 mm (etwas längere Gabel)
Engine type:	Electric
Type of construction:	High-lift pallet truck
Mast type:	Standard
Additional equipment:	Servo, Integrated charger
Technical Condition:	good
Condition (visual):	good
UVV (Technical Inspection):	current
Tyres:	Polyurethane
Battery:	BJ. 2012 24 Volt 357 Ah
Dead weight:	1,325 kg



Ready to use. Shipping can be arranged at your request. Sold as seen without any warranty. Please make an arrangement for evaluation prior to order.

* All prices are quoted net of the statutory value-added tax from our warehouse in Duesseldorf, if not described otherwise. Errors and omissions excepted. All items subject to prior sale. Offer and sales exclusively to business customers as set forth in § 14 BGB.

(^h) Operating hours quoted as read from the counters, errors excepted.

Date printed: 30.12.2025