



# DUESSEL-STAPLER

**DUESSEL-STAPLER Helmuth Poensgen/strong>**  
**Owner: Helmuth Poensgen**  
**An der Leimkuhle 19**  
**40625 Dusseldorf**  
**Germany**

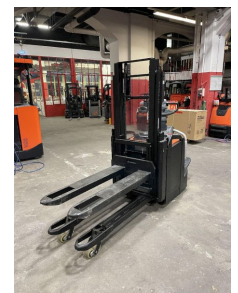
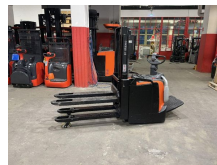
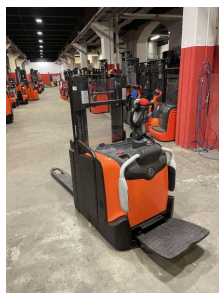
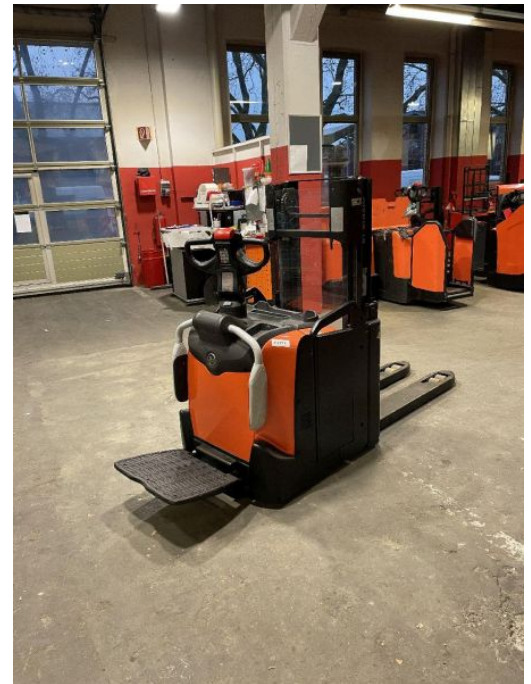
**Phone: +49 1522 9858711**  
**Fax: +49 211 54 47 35 92**

**Email: [info@duessel-stapler.de](mailto:info@duessel-stapler.de)**  
**Internet: [duessel-stapler.de](http://duessel-stapler.de)**

## BT - SPE 200 D

Preis auf  
Anfrage

<b>Offer Nr.:</b>	HPK0343
<b>Manufacturer:</b>	BT
<b>Model:</b>	SPE 200 D
<b>YoC:</b>	2016
<b>Serienr.:</b>	... 467711
<b>Operating Hours<sup>h</sup>:</b>	5,966 h
<b>Lifting capacity:</b>	1,000 kg
<b>Lifting height:</b>	2,100 mm
<b>Construction height:</b>	1,600 mm
<b>Forks:</b>	Länge 1.200 mm
<b>Engine type:</b>	Electric
<b>Type of construction:</b>	High-lift pallet truck
<b>Mast type:</b>	Standard
<b>Additional equipment:</b>	Servo, Initial lift
<b>Technical Condition:</b>	good
<b>Condition (visual):</b>	good
<b>UVV (Technical Inspection):</b>	current
<b>Tyres:</b>	Polyurethane
<b>Battery:</b>	Bj. 2016 24 Volt 500 Ah
<b>Dead weight:</b>	1,395 kg



Ready to use. Shipping can be arranged at your request. Sold as seen without any warranty. Please make an arrangement for evaluation prior to order.

\* All prices are quoted net of the statutory value-added tax from our warehouse in Duesseldorf, if not described otherwise.  
Errors and omissions excepted. All items subject to prior sale. Offer and sales exclusively to business customers as set forth in § 14 BGB.

(<sup>h</sup>) Operating hours quoted as read from the counters, errors excepted.

Date printed: 19.12.2025