



DUESSEL-STAPLER

DUESSEL-STAPLER Helmuth Poensgen/strong>
Owner: Helmuth Poensgen
An der Leimkuhle 19
40625 Dusseldorf
Germany

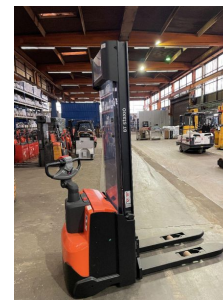
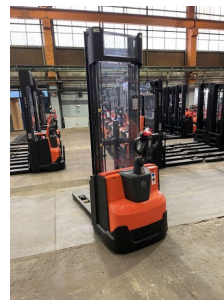
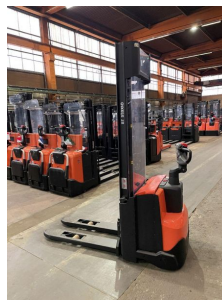
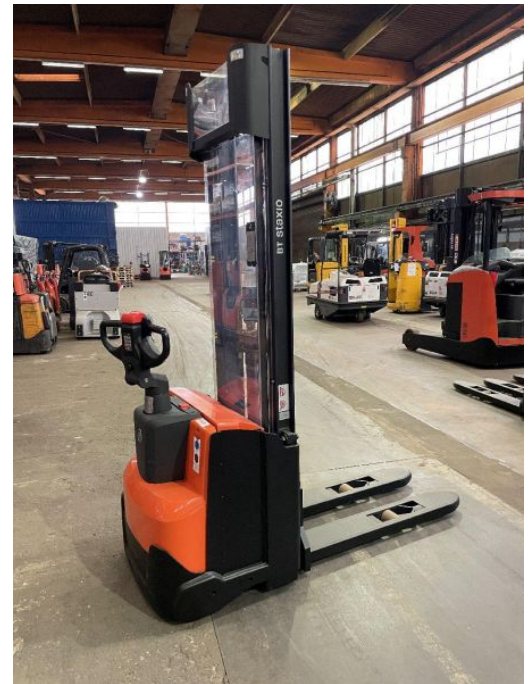
Phone: +49 1522 9858711
Fax: +49 211 54 47 35 92

Email: info@duessel-stapler.de
Internet: duessel-stapler.de

BT - SWE 120

Preis auf
Anfrage

Offer Nr.:	HPK02440
Manufacturer:	BT
Model:	SWE 120
YoC:	2013
Serienr.:	... 270485
Operating Hours^h:	907 h
Lifting capacity:	1,200 kg
Lifting height:	3,700 mm
Free lift:	1,900 mm
Construction height:	2,300 mm
Forks:	Länge 1.150 mm
Engine type:	Electric
Type of construction:	High-lift pallet truck
Mast type:	Duplex
Additional equipment:	Platform - foldable
Technical Condition:	excellent
Condition (visual):	excellent
UVV (Technical Inspection):	current
Tyres:	Polyurethane
Battery:	Bj. 2013 24 Volt 225 Ah
Dead weight:	1,125 kg



Ready to use. Shipping can be arranged at your request. Sold as seen without any warranty. Please make an arrangement for evaluation prior to order.

* All prices are quoted net of the statutory value-added tax from our warehouse in Dusseldorf, if not described otherwise. Errors and omissions excepted. All items subject to prior sale. Offer and sales exclusively to business customers as set forth in § 14 BGB.

^(h) Operating hours quoted as read from the counters, errors excepted.

Date printed: 14.03.2025