



DUESSEL-STAPLER

DUESSEL-STAPLER Helmuth Poensgen e.K.

Owner: Helmuth Poensgen

An der Leimkuhle 19

40625 Dusseldorf

Germany

Phone: +49 1522 9858711

Fax: +49 211 54 47 35 92

Email: info@duessel-stapler.de

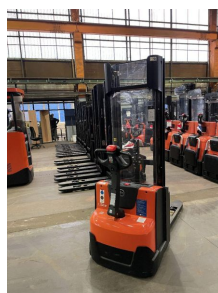
Internet: duessel-stapler.de

BT - SWE 120

Price: € 5,290.00 *

Statutory VAT (19 %) to be added

Offer Nr.:	HPK0171
Manufacturer:	BT
Model:	SWE 120
YoC:	2014
Serienr.:	... 313912
Operating Hours^h:	7,539 h
Lifting capacity:	1,200 kg
Lifting height:	3,300 mm
Free lift:	1,750 mm
Construction height:	2,140 mm
Forks:	Länge 1.150 mm
Engine type:	Electric
Type of construction:	High-lift pallet truck
Mast type:	Duplex
Technical Condition:	good
Condition (visual):	good
UVV (Technical Inspection):	current
Tyres:	Polyurethane
Battery:	Bj. 2014 24 Volt 225 Ah
Dead weight:	1,050 kg



Ready to use. Shipping can be arranged at your request. Sold as seen without any warranty. Please make an arrangement for evaluation prior to order.

* All prices are quoted net of the statutory value-added tax from our warehouse in Duesseldorf, if not described otherwise.

Errors and omissions excepted. All items subject to prior sale. Offer and sales exclusively to business customers as set forth in § 14 BGB.

(^h) Operating hours quoted as read from the counters, errors excepted.

Date printed: 26.04.2024