



DUESSEL-STAPLER

DUESSEL-STAPLER Helmuth Poensgen e.K.

Owner: Helmuth Poensgen

An der Leimkuhle 19

40625 Dusseldorf

Germany

Phone: +49 1522 9858711

Fax: +49 211 54 47 35 92

Email: info@duessel-stapler.de

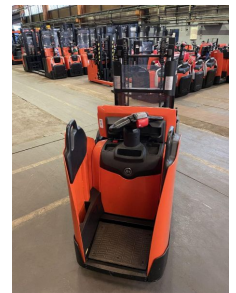
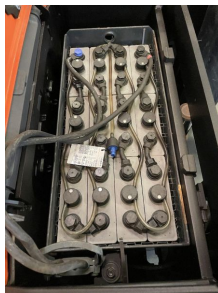
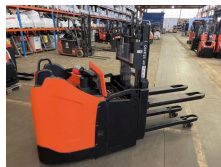
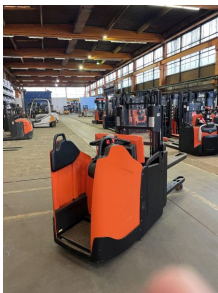
Internet: duessel-stapler.de

BT - SPE 200 D

Price: € 5,290.00 *

Statutory VAT (19 %) to be added

Offer Nr.:	HPK0185
Manufacturer:	BT
Model:	SPE 200 D
YoC:	2016
Seriennr.:	... 466931
Operating Hours^h:	3,559 h
Lifting capacity:	1,000 kg
Lifting height:	1,400 mm
Construction height:	1,650 mm
Forks:	Länge 1.150 mm
Engine type:	Electric
Type of construction:	High-lift pallet truck
Mast type:	Standard
Additional equipment:	Initial lift
Technical Condition:	excellent
Condition (visual):	excellent
UVV (Technical Inspection):	current
Tyres:	Polyurethane
Battery:	Bj. 2016 24 Volt 375 Ah
Dead weight:	1,400 kg



Ready to use. Shipping can be arranged at your request. Sold as seen without any warranty. Please make an arrangement for evaluation prior to order.

* All prices are quoted net of the statutory value-added tax from our warehouse in Duesseldorf, if not described otherwise.

Errors and omissions excepted. All items subject to prior sale. Offer and sales exclusively to business customers as set forth in § 14 BGB.

(^h) Operating hours quoted as read from the counters, errors excepted.

Date printed: 24.04.2024