



DUESSEL-STAPLER

DUESSEL-STAPLER Helmuth Poensgen/strong>
Owner: Helmuth Poensgen
An der Leimkuhle 19
40625 Dusseldorf
Germany

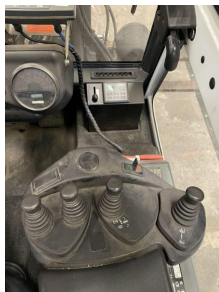
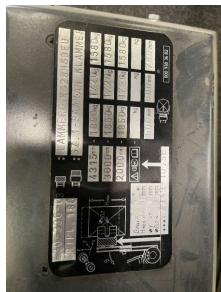
Phone: +49 1522 9858711
Fax: +49 211 54 47 35 92

Email: info@duessel-stapler.de
Internet: duessel-stapler.de

Linde - E 30-3 - Contf/Triplex4.330HH/3+4Ventil

Preis auf
Anfrage

Offer Nr.:	HPM0058
Manufacturer:	Linde
Model:	E 30-3
YoC:	2010
Serienr.:	... A00171
Operating Hours ^h :	725 h
Lifting capacity:	3,000 kg
Lifting height:	4,330 mm
Free lift:	1,400 mm
Construction height:	2,100 mm
Forks:	Länge 1.200 mm Zinkenv. Öffnung 1.000 mm
Engine type:	Electric
Type of construction:	Electric 4-wheel
Mast type:	Triplex
Attachments:	Sideshifts, Fork positioners
Additional equipment:	3rd valve, Pedal-gesteuert, 4th valve, Spotlight rear, Spotlight front, Heater, STVZO, Weatherproof cabin
Technical Condition:	excellent
Condition (visual):	good
UVV (Technical Inspection):	current
Tyres:	Solid
Battery:	Bj. 2010 80 Volt 625 Ah
Dead weight:	5,100 kg



Ready to use. Shipping can be arranged at your request. Sold as seen without any warranty. Please make an arrangement for evaluation prior to order.

* All prices are quoted net of the statutory value-added tax from our warehouse in Duesseldorf, if not described otherwise. Errors and omissions excepted. All items subject to prior sale. Offer and sales exclusively to business customers as set forth in § 14 BGB.

(^h) Operating hours quoted as read from the counters, errors excepted.

Date printed: 30.07.2025