



# DUESSEL-STAPLER

**DUESSEL-STAPLER Helmuth Poensgen e.K.**

Owner: Helmuth Poensgen  
An der Leimkuhle 19  
40625 Dusseldorf  
Germany

**Phone:** +49 211 9132 5860

**Fax:** +49 211 54 47 35 92

**Email:** info@duessel-stapler.de

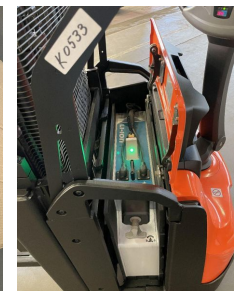
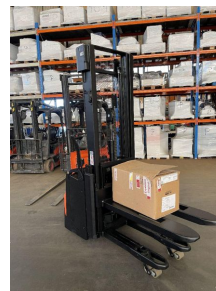
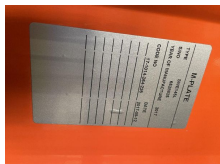
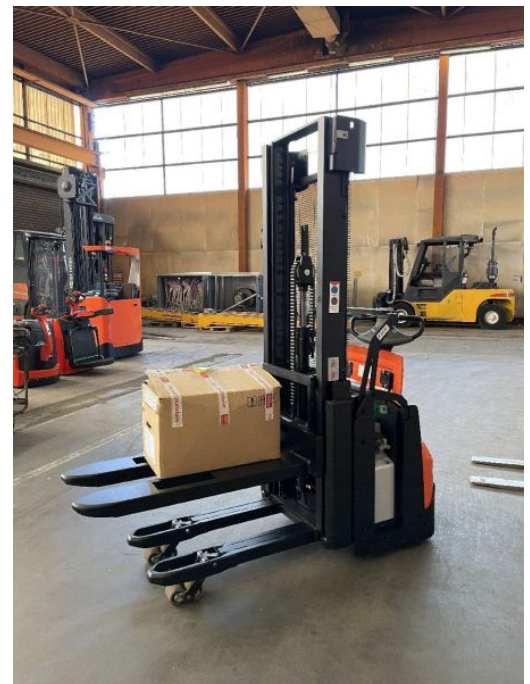
**Internet:** duessel-stapler.de

## BT - SWE 145 L - 1,45to/ ...

**Price: € 8,650.00 \***

Statutory VAT (19 %) to be added

<b>Offer Nr.:</b>	HPK0533
<b>Manufacturer:</b>	BT
<b>Model:</b>	SWE 145 L
<b>YoC:</b>	2017
<b>Seriennr.:</b>	... 528825
<b>Operating Hours<sup>h</sup>:</b>	5,995 h
<b>Lifting capacity:</b>	1,450 kg
<b>Lifting height:</b>	3,300 mm
<b>Free lift:</b>	1,700 mm
<b>Construction height:</b>	2,200 mm
<b>Forks:</b>	Länge 1.150 mm
<b>Engine type:</b>	Electric
<b>Type of construction:</b>	High-lift pallet truck
<b>Mast type:</b>	Duplex
<b>Additional equipment:</b>	Initial lift
<b>Technical Condition:</b>	excellent
<b>Condition (visual):</b>	excellent
<b>UVV (Technical Inspection):</b>	new
<b>Tyres:</b>	Polyurethane
<b>Battery:</b>	Lithium-Ionen / BJ. 2017 25,9 Volt 196 Ah
<b>Dead weight:</b>	1,375 kg



Ready to use. Shipping can be arranged at your request. Sold as seen without any warranty. Please make an arrangement for evaluation prior to order.

\* All prices are quoted net of the statutory value-added tax from our warehouse in Dusseldorf, if not described otherwise.

Errors and omissions excepted. All items subject to prior sale. Offer and sales exclusively to business customers as set forth in § 14 BGB.

(<sup>h</sup>) Operating hours quoted as read from the counters, errors excepted.

Date printed: 19.08.2022