



DUESSEL-STAPLER

DUESSEL-STAPLER Helmuth Poensgen/strong>
Owner: Helmuth Poensgen
An der Leimkuhle 19
40625 Dusseldorf
Germany

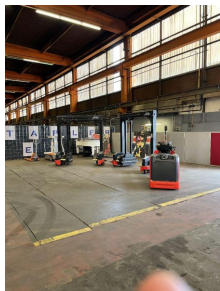
Phone: +49 1522 9858711
Fax: +49 211 54 47 35 92

Email: info@duessel-stapler.de
Internet: duessel-stapler.de

Linde - P 50 C - Logistik-Zug !!Miete möglich!!4.000N/05

Preis auf
Anfrage

Offer Nr.:	HPM0131
Manufacturer:	Linde
Model:	P 50 C
YoC:	2014
Seriennr.:	... E00187
Operating Hours ^h :	95 h
Lifting capacity:	5,000 kg
Construction height:	1,650 mm
Engine type:	Electric
Type of construction:	Tractor
Mast type:	None
Technical Condition:	excellent
Condition (visual):	excellent
UVV (Technical Inspection):	current
Tyres:	Superelastic
Battery:	BJ. 2014 24 Volt 345 Ah
Dead weight:	2,450 kg



Linde Glieder-Zug Zugmaschine mit 2 Gelenkwag. ausbaubar bis 6 Wagen !! auch zur Miete !! Zugkraft 4.000 to

Ready to use. Shipping can be arranged at your request. Sold as seen without any warranty. Please make an arrangement for evaluation prior to order.

* All prices are quoted net of the statutory value-added tax from our warehouse in Duesseldorf, if not described otherwise.
Errors and omissions excepted. All items subject to prior sale. Offer and sales exclusively to business customers as set forth in § 14 BGB.

(^h) Operating hours quoted as read from the counters, errors excepted.

Date printed: 25.06.2025