



DUESSEL-STAPLER

DUESSEL-STAPLER Helmuth Poensgen/strong>
Owner: Helmuth Poensgen
An der Leimkuhle 19
40625 Dusseldorf
Germany

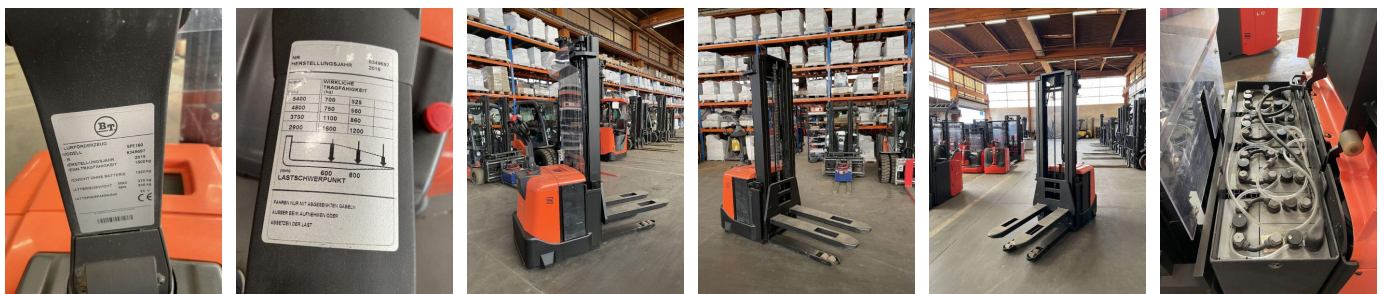
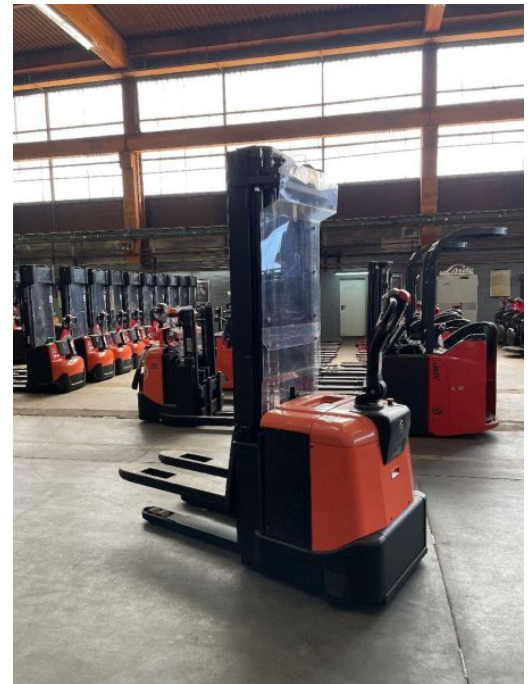
Phone: +49 1522 9858711
Fax: +49 211 54 47 35 92

Email: info@duessel-stapler.de
Internet: duessel-stapler.de

BT - BT SPE 200 - 2to//HH3550/Waage

Preis auf
Anfrage

Offer Nr.:	HPM0007
Manufacturer:	BT
Model:	BT SPE 200
YoC:	2015
Serienr.:	... 393048
Operating Hours ^h :	1,859 h
Lifting capacity:	2,000 kg
Lifting height:	3,550 mm
Construction height:	2,420 mm
Forks:	Länge 1.150 mm
Fork carriage:	!! Breite Gabeln! Amerikanische Ausführung 680mm breite !!
Engine type:	Electric
Type of construction:	High-lift pallet truck
Mast type:	Standard
Additional equipment:	Scales
Technical Condition:	excellent
Condition (visual):	excellent
UVV (Technical Inspection):	current
Tyres:	Polyurethane
Battery:	Bj. 2013 24 Volt 430 Ah
Dead weight:	1,625 kg



Ready to use. Shipping can be arranged at your request. Sold as seen without any warranty. Please make an arrangement for evaluation prior to order.

* All prices are quoted net of the statutory value-added tax from our warehouse in Duesseldorf, if not described otherwise.
Errors and omissions excepted. All items subject to prior sale. Offer and sales exclusively to business customers as set forth in § 14 BGB.

(^h) Operating hours quoted as read from the counters, errors excepted.

Date printed: 09.05.2025