



DUESSEL-STAPLER

DUESSEL-STAPLER Helmuth Poensgen/strong>
Owner: Helmuth Poensgen
An der Leimkuhle 19
40625 Dusseldorf
Germany

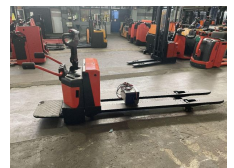
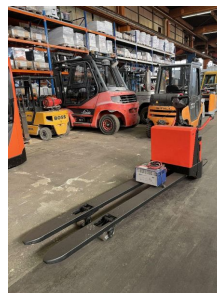
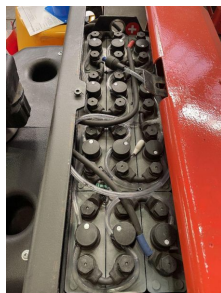
Phone: +49 1522 9858711
Fax: +49 211 54 47 35 92

Email: info@duessel-stapler.de
Internet: duessel-stapler.de

BT - LPE 200/8 - Batterie Bj. 2020

Preis auf
Anfrage

Offer Nr.:	HPM0166
Manufacturer:	BT
Model:	LPE 200/8
YoC:	2008
Seriennr.:	... 067253
Operating Hours^h:	6,906 h
Lifting capacity:	2,000 kg
Construction height:	1,600 mm
Forks:	Länge 2.250 mm
Engine type:	Electric
Type of construction:	Pallet truck
Mast type:	None
Technical Condition:	good
Condition (visual):	good
UVV (Technical Inspection):	current
Tyres:	Polyurethane
Battery:	Bj. 2020 24 Volt 225 Ah
Dead weight:	756 kg



Ready to use. Shipping can be arranged at your request. Sold as seen without any warranty. Please make an arrangement for evaluation prior to order.

* All prices are quoted net of the statutory value-added tax from our warehouse in Duesseldorf, if not described otherwise. Errors and omissions excepted. All items subject to prior sale. Offer and sales exclusively to business customers as set forth in § 14 BGB.

(^h) Operating hours quoted as read from the counters, errors excepted.

Date printed: 28.06.2026