



DUESSEL-STAPLER

DUESSEL-STAPLER Helmuth Poensgen/strong>
Owner: Helmuth Poensgen
An der Leimkuhle 19
40625 Dusseldorf
Germany

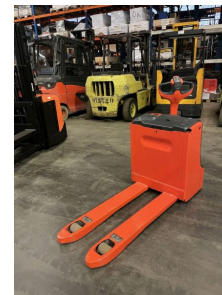
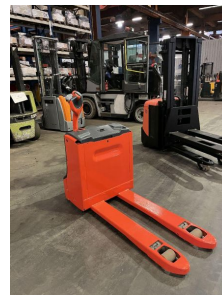
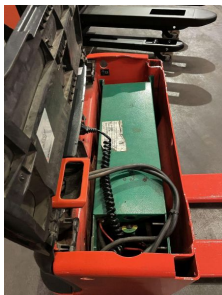
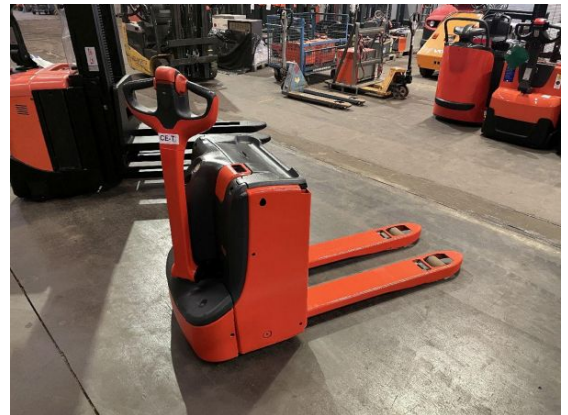
Phone: +49 1522 9858711
Fax: +49 211 54 47 35 92

Email: info@duessel-stapler.de
Internet: duessel-stapler.de

Linde - T 16

Preis auf
Anfrage

Offer Nr.:	HPM0246
Manufacturer:	Linde
Model:	T 16
YoC:	2017
Seriennr.:	... H10629
Operating Hours ^h :	2,316 h
Lifting capacity:	1,600 kg
Construction height:	1,650 mm
Forks:	Länge 1.200 mm
Engine type:	Electric
Type of construction:	Pallet truck
Mast type:	None
Additional equipment:	Integrated charger
Technical Condition:	good
Condition (visual):	good
UVV (Technical Inspection):	current
Tyres:	Polyurethane
Battery:	Bj. 2017 24 Volt
Dead weight:	545 kg



Ready to use. Shipping can be arranged at your request. Sold as seen without any warranty. Please make an arrangement for evaluation prior to order.

* All prices are quoted net of the statutory value-added tax from our warehouse in Duesseldorf, if not described otherwise.
Errors and omissions excepted. All items subject to prior sale. Offer and sales exclusively to business customers as set forth in § 14 BGB.

(^h) Operating hours quoted as read from the counters, errors excepted.

Date printed: 09.05.2025