



DUESSEL-STAPLER

DUESSEL-STAPLER Helmuth Poensgen/strong>
Owner: Helmuth Poensgen
An der Leimkuhle 19
40625 Dusseldorf
Germany

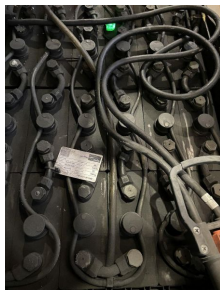
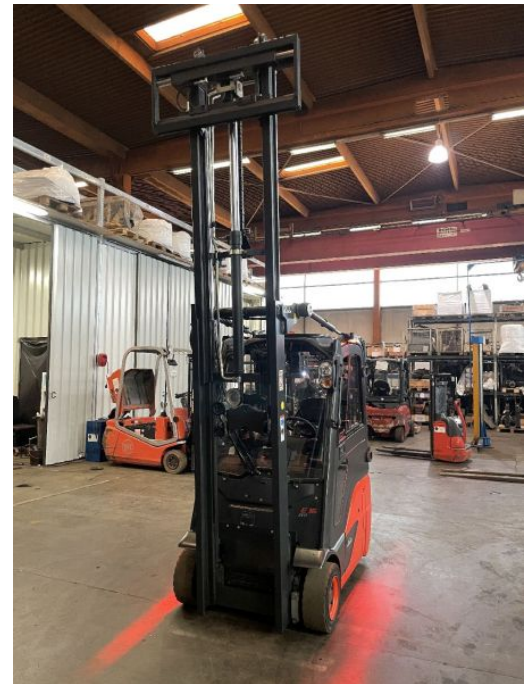
Phone: +49 1522 9858711
Fax: +49 211 54 47 35 92

Email: info@duessel-stapler.de
Internet: duessel-stapler.de

Linde - E16 C02 - 1,6t/Duplex/Freihub/Containerf.

Preis auf
Anfrage

Offer Nr.:	HPM0588
Manufacturer:	Linde
Model:	E16 C02
YoC:	2016
Serienr.:	... G04876
Operating Hours ^h :	7,620 h
Lifting capacity:	1,600 kg
Lifting height:	3,100 mm
Free lift:	1,600 mm
Construction height:	2,050 mm
Forks:	Länge 1.200
Fork carriage:	Der Stapler wird für Endkunden Aufbereitet
Engine type:	Electric
Type of construction:	Electric 3-wheel
Mast type:	Duplex
Attachments:	Sideshifts
Additional equipment:	3rd valve, Spotlight rear, Spotlight front, Weatherproof cabin
Technical Condition:	good
Condition (visual):	good
UVV (Technical Inspection):	not specified
Tyres:	Solid
Battery:	BJ. 2019 48 Volt 500 Ah
Dead weight:	4,040 kg



Ready to use. Shipping can be arranged at your request. Sold as seen without any warranty. Please make an arrangement for evaluation prior to order.

* All prices are quoted net of the statutory value-added tax from our warehouse in Duesseldorf, if not described otherwise. Errors and omissions excepted. All items subject to prior sale. Offer and sales exclusively to business customers as set forth in § 14 BGB.

(^h) Operating hours quoted as read from the counters, errors excepted.

Date printed: 09.01.2026