



DUESSEL-STAPLER

DUESSEL-STAPLER Helmuth Poensgen/strong>
Owner: Helmuth Poensgen
An der Leimkuhle 19
40625 Dusseldorf
Germany

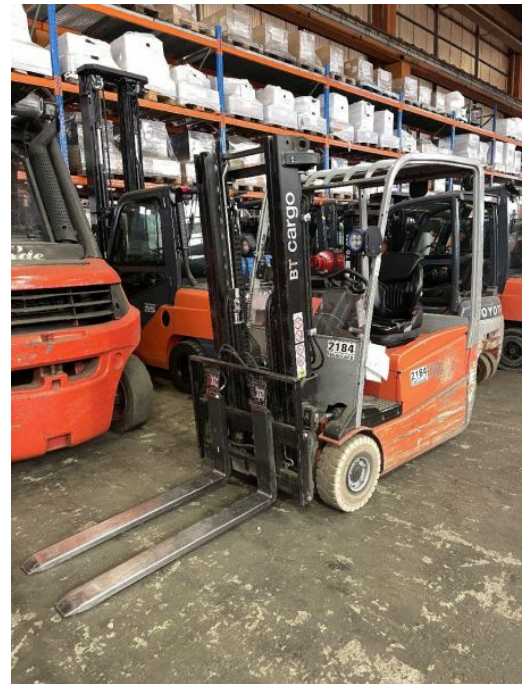
Phone: +49 1522 9858711
Fax: +49 211 54 47 35 92

Email: info@duessel-stapler.de
Internet: duessel-stapler.de

BT - C3E 160 L

Preis auf
Anfrage

| | |
|-------------------------------------|-----------------------------------------------------------------------------------------|
| Offer Nr.: | HPM0363 |
| Manufacturer: | BT |
| Model: | C3E 160 L |
| YoC: | 2013 |
| Seriennr.: | ... 377376 |
| Operating Hours^h: | 18,000 h |
| Lifting capacity: | 1,600 kg |
| Lifting height: | 2,970 mm |
| Free lift: | 1,450 mm |
| Construction height: | 2,045 mm |
| Forks: | Länge 1.200 mm |
| Fork carriage: | Gabeln Ausschub auf 2.000 mm |
| Engine type: | Electric |
| Type of construction: | Electric 3-wheel |
| Mast type: | Duplex |
| Attachments: | Sideshifts |
| Additional equipment: | 3rd valve, Weiße Reifen, 4th valve, Spotlight rear, Spotlight front, Weatherproof cover |
| Technical Condition: | fair |
| Condition (visual): | fair |
| UVV (Technical Inspection): | not specified |
| Tyres: | Solid |
| Battery: | Bj. 2014 48 Volt 690 Ah |
| Dead weight: | 3,300 kg |



Ready to use. Shipping can be arranged at your request. Sold as seen without any warranty. Please make an arrangement for evaluation prior to order.

* All prices are quoted net of the statutory value-added tax from our warehouse in Dusseldorf, if not described otherwise. Errors and omissions excepted. All items subject to prior sale. Offer and sales exclusively to business customers as set forth in § 14 BGB.

(^h) Operating hours quoted as read from the counters, errors excepted.

Date printed: 06.07.2026