



DUESSEL-STAPLER

DUESSEL-STAPLER Helmuth Poensgen/strong>
Owner: Helmuth Poensgen
An der Leimkuhle 19
40625 Dusseldorf
Germany

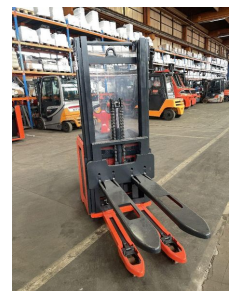
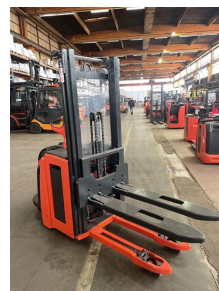
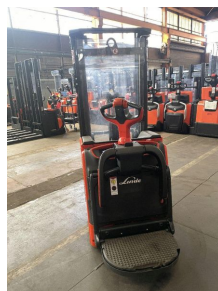
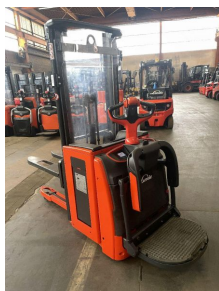
Phone: +49 1522 9858711
Fax: +49 211 54 47 35 92

Email: info@duessel-stapler.de
Internet: duessel-stapler.de

Linde - L 16 AP - 1,6t/Containerf/Duplex/Initialhub

Preis auf
Anfrage

Offer Nr.:	HPM0305
Manufacturer:	Linde
Model:	L 16 AP
YoC:	2018
Seriennr.:	... J06081
Operating Hours^h:	3,108 h
Lifting capacity:	1,600 kg
Lifting height:	2,930 mm
Free lift:	1,450 mm
Construction height:	1,930 mm
Forks:	Länge 1.200 mm
Engine type:	Electric
Type of construction:	High-lift pallet truck
Mast type:	Duplex
Additional equipment:	Servo, Initial lift, Platform - foldable
Technical Condition:	excellent
Condition (visual):	excellent
UVV (Technical Inspection):	current
Tyres:	Polyurethane
Battery:	Gel Bj.2021 24 Volt 300 Ah
Dead weight:	1,385 kg



Ready to use. Shipping can be arranged at your request. Sold as seen without any warranty. Please make an arrangement for evaluation prior to order.

* All prices are quoted net of the statutory value-added tax from our warehouse in Duesseldorf, if not described otherwise.
Errors and omissions excepted. All items subject to prior sale. Offer and sales exclusively to business customers as set forth in § 14 BGB.

(^h) Operating hours quoted as read from the counters, errors excepted.

Date printed: 09.05.2025