



DUESSEL-STAPLER

DUESSEL-STAPLER Helmuth Poensgen/strong>
Owner: Helmuth Poensgen
An der Leimkuhle 19
40625 Dusseldorf
Germany

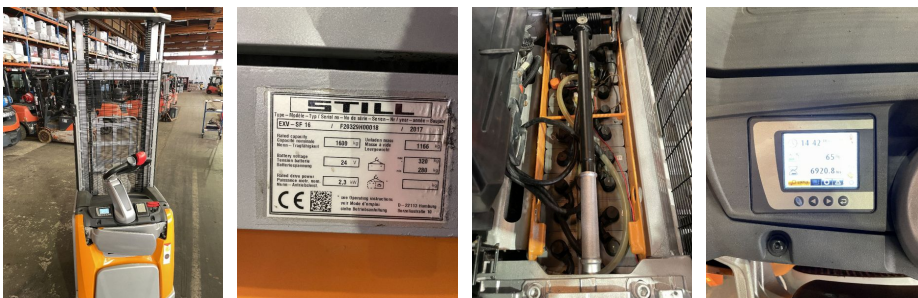
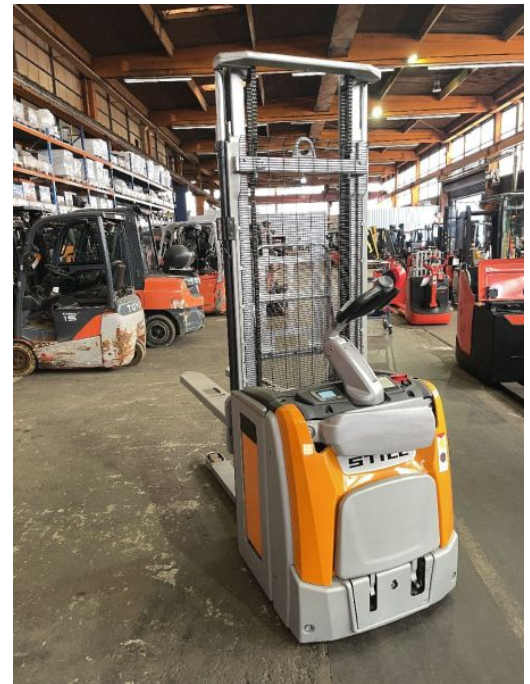
Phone: +49 1522 9858711
Fax: +49 211 54 47 35 92

Email: info@duessel-stapler.de
Internet: duessel-stapler.de

Still - EXV - SF 16 - 1,6to/Gabel-Länge 1.600 mm!!

Preis auf
Anfrage

Offer Nr.:	HPM0196
Manufacturer:	Still
Model:	EXV - SF 16
YoC:	2017
Serienr.:	... H00018
Operating Hours^h:	6,919 h
Lifting capacity:	1,600 kg
Lifting height:	3,330 mm
Construction height:	2,120 mm
Forks:	Länge 1.600 mm !!!!
Engine type:	Electric
Type of construction:	High-lift pallet truck
Mast type:	Standard
Additional equipment:	Servo, Platform - foldable
Technical Condition:	good
Condition (visual):	excellent
UVV (Technical Inspection):	current
Tyres:	Polyurethane
Battery:	Bj. 2017 24 Volt 325 Ah
Dead weight:	1,475 kg



Ready to use. Shipping can be arranged at your request. Sold as seen without any warranty. Please make an arrangement for evaluation prior to order.

* All prices are quoted net of the statutory value-added tax from our warehouse in Dusseldorf, if not described otherwise. Errors and omissions excepted. All items subject to prior sale. Offer and sales exclusively to business customers as set forth in § 14 BGB.

(^h) Operating hours quoted as read from the counters, errors excepted.

Date printed: 02.04.2026