



# DUESSEL-STAPLER

**DUESSEL-STAPLER Helmuth Poensgen e.K.**

Owner: Helmuth Poensgen

An der Leimkuhle 19

40625 Dusseldorf

Germany

**Phone:** +49 1522 9858711

**Fax:** +49 211 54 47 35 92

**Email:** [info@duessel-stapler.de](mailto:info@duessel-stapler.de)

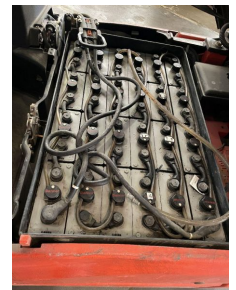
**Internet:** [duessel-stapler.de](http://duessel-stapler.de)

## Linde - E16C - 01 - ...

**Price: € 17,490.00 \***

Statutory VAT (19 %) to be added

<b>Offer Nr.:</b>	HPM0412
<b>Manufacturer:</b>	Linde
<b>Model:</b>	E16C - 01
<b>YoC:</b>	2013
<b>Seriennr.:</b>	... D02030
<b>Operating Hours<sup>h</sup>:</b>	4,847 h
<b>Lifting capacity:</b>	1,600 kg
<b>Lifting height:</b>	2,810 mm
<b>Free lift:</b>	1,200 mm
<b>Construction height:</b>	1,950 mm
<b>Forks:</b>	Länge: 1.000 mm Zinkenversteller (Öffnung 1.050 mm)
<b>Engine type:</b>	Electric
<b>Type of construction:</b>	Electric 3-wheel
<b>Mast type:</b>	Duplex
<b>Attachments:</b>	Sideshifts
<b>Additional equipment:</b>	3rd valve, Weiße Reifen, Pedal-gesteuert, 4th valve, Weatherproof cover
<b>Technical Condition:</b>	good
<b>Condition (visual):</b>	good
<b>UVV (Technical Inspection):</b>	current
<b>Tyres:</b>	Solid
<b>Battery:</b>	Bj. 2013 48 Volt 625 Ah
<b>Dead weight:</b>	3,165 kg



Ready to use. Shipping can be arranged at your request. Sold as seen without any warranty. Please make an arrangement for evaluation prior to order.

\* All prices are quoted net of the statutory value-added tax from our warehouse in Duesseldorf, if not described otherwise.

Errors and omissions excepted. All items subject to prior sale. Offer and sales exclusively to business customers as set forth in § 14 BGB.

(<sup>h</sup>) Operating hours quoted as read from the counters, errors excepted.

Date printed: 17.04.2024