



DUESSEL-STAPLER

DUESSEL-STAPLER Helmuth Poensgen/strong>
Owner: Helmuth Poensgen
An der Leimkuhle 19
40625 Dusseldorf
Germany

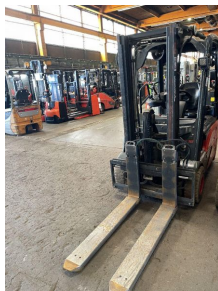
Phone: +49 1522 9858711
Fax: +49 211 54 47 35 92

Email: info@duessel-stapler.de
Internet: duessel-stapler.de

Linde - E16-02 - Containerf/3+4Ventil7GabelAusschub

Preis auf
Anfrage

Offer Nr.:	HPM0393
Manufacturer:	Linde
Model:	E16-02
YoC:	2015
Serienr.:	... F11048
Operating Hours ^h :	12,441 h
Lifting capacity:	1,600 kg
Lifting height:	2,790 mm
Free lift:	1,400 mm
Construction height:	1,950 mm
Forks:	Länge 1.200 (Vorschubgabeln 2.000 mm)
Engine type:	Electric
Type of construction:	Electric 3-wheel
Mast type:	Duplex
Additional equipment:	3rd valve, 4th valve, Spotlight rear, Spotlight front
Technical Condition:	fair
Condition (visual):	fair
UVV (Technical Inspection):	not specified
Tyres:	Solid
Dead weight:	3,000 kg



Ready to use. Shipping can be arranged at your request. Sold as seen without any warranty. Please make an arrangement for evaluation prior to order.

* All prices are quoted net of the statutory value-added tax from our warehouse in Duesseldorf, if not described otherwise. Errors and omissions excepted. All items subject to prior sale. Offer and sales exclusively to business customers as set forth in § 14 BGB.

(^h) Operating hours quoted as read from the counters, errors excepted.

Date printed: 07.12.2025