



# DUESSEL-STAPLER

DUESSEL-STAPLER Helmuth Poensgen/strong>  
Owner: Helmuth Poensgen  
An der Leimkuhle 19  
40625 Dusseldorf  
Germany

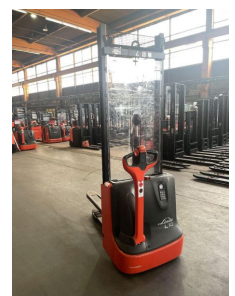
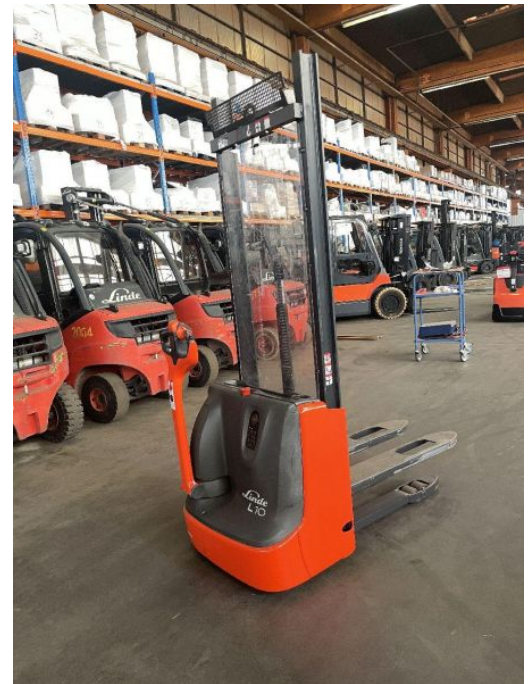
Phone: +49 1522 9858711  
Fax: +49 211 54 47 35 92

Email: [info@duessel-stapler.de](mailto:info@duessel-stapler.de)  
Internet: [duessel-stapler.de](http://duessel-stapler.de)

## Linde - L 10

Preis auf  
Anfrage

Offer Nr.:	HPM0178
Manufacturer:	Linde
Model:	L 10
YoC:	2018
Serienr.:	... J02724
Operating Hours <sup>h</sup> :	1,622 h
Lifting capacity:	1,000 kg
Lifting height:	2,000 mm
Construction height:	2,390 mm
Forks:	Länge 1.200 mm
Engine type:	Electric
Type of construction:	High-lift pallet truck
Mast type:	Standard
Technical Condition:	excellent
Condition (visual):	excellent
UVV (Technical Inspection):	current
Tyres:	Polyurethane
Battery:	Bj. 2018 24 Volt 200 Ah
Dead weight:	775 kg



Ready to use. Shipping can be arranged at your request. Sold as seen without any warranty. Please make an arrangement for evaluation prior to order.

\* All prices are quoted net of the statutory value-added tax from our warehouse in Duesseldorf, if not described otherwise.  
Errors and omissions excepted. All items subject to prior sale. Offer and sales exclusively to business customers as set forth in § 14 BGB.

(<sup>h</sup>) Operating hours quoted as read from the counters, errors excepted.

Date printed: 03.09.2025