



DUESSEL-STAPLER

DUESSEL-STAPLER Helmuth Poensgen/strong>
Owner: Helmuth Poensgen
An der Leimkuhle 19
40625 Dusseldorf
Germany

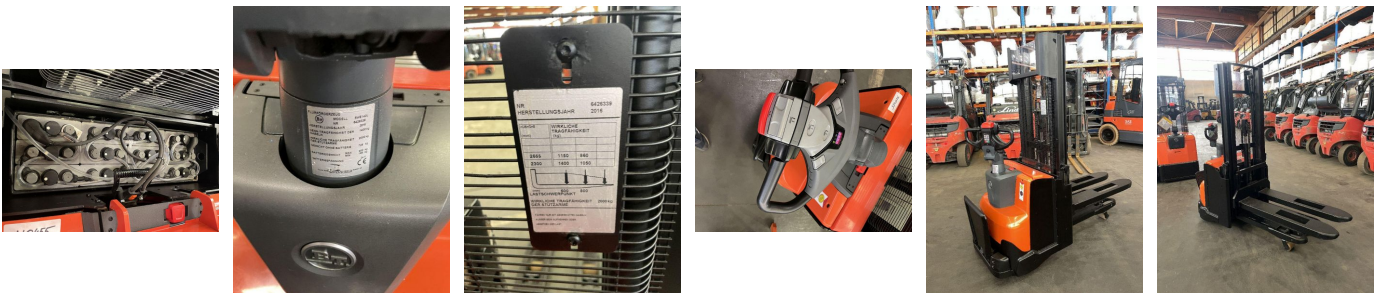
Phone: +49 1522 9858711
Fax: +49 211 54 47 35 92

Email: info@duessel-stapler.de
Internet: duessel-stapler.de

BT - SWE 140 L - 1,4t/InitialHub/Containerf.BH1.950

Preis auf
Anfrage

Offer Nr.:	HPM0455
Manufacturer:	BT
Model:	SWE 140 L
YoC:	2016
Seriennr.:	... 426339
Operating Hours^h:	3,550 h
Lifting capacity:	1,400 kg
Lifting height:	2,655 mm
Free lift:	1,400 mm
Construction height:	1,950 mm
Forks:	Länge 1.150 mm
Engine type:	Electric
Type of construction:	High-lift pallet truck
Mast type:	Duplex
Additional equipment:	Initial lift
Technical Condition:	good
Condition (visual):	good
UVV (Technical Inspection):	current
Tyres:	Polyurethane
Battery:	BJ. 2016 24 Volt 275 Ah
Dead weight:	975 kg



Ready to use. Shipping can be arranged at your request. Sold as seen without any warranty. Please make an arrangement for evaluation prior to order.

* All prices are quoted net of the statutory value-added tax from our warehouse in Dusseldorf, if not described otherwise. Errors and omissions excepted. All items subject to prior sale. Offer and sales exclusively to business customers as set forth in § 14 BGB.

(^h) Operating hours quoted as read from the counters, errors excepted.

Date printed: 16.04.2026