



DUESSEL-STAPLER

DUESSEL-STAPLER Helmuth Poensgen e.K.

Owner: Helmuth Poensgen

An der Leimkuhle 19

40625 Dusseldorf

Germany

Phone: +49 1522 9858711

Fax: +49 211 54 47 35 92

Email: info@duessel-stapler.de

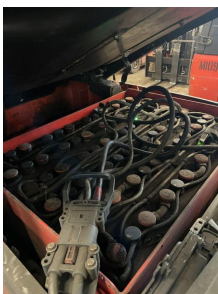
Internet: duessel-stapler.de

Linde - E20PH 02 - ...

Price: € 16,750.00 *

Statutory VAT (19 %) to be added

Offer Nr.:	HPM0415
Manufacturer:	Linde
Model:	E20PH 02
YoC:	2016
Serienr.:	... G10302
Operating Hours^h:	10,735 h
Lifting capacity:	2,000 kg
Lifting height:	3,140 mm
Free lift:	1,200 mm
Construction height:	2,100 mm
Forks:	Länge 1.100 (Zinkenv. Öffnung 1.050 mm)
Engine type:	Electric
Type of construction:	Electric 4-wheel
Mast type:	Duplex
Attachments:	Sideshifts, Fork positioners
Additional equipment:	3rd valve, Pedal-gesteuert, 4th valve, Spotlight rear, Spotlight front, Weatherproof cover
Technical Condition:	fair
Condition (visual):	fair
UVV (Technical Inspection):	not specified
Tyres:	Solid
Battery:	Bj. 09- 2016 48 Volt 775 Ah
Dead weight:	3,475 kg



Ready to use. Shipping can be arranged at your request. Sold as seen without any warranty. Please make an arrangement for evaluation prior to order.

* All prices are quoted net of the statutory value-added tax from our warehouse in Duesseldorf, if not described otherwise.

Errors and omissions excepted. All items subject to prior sale. Offer and sales exclusively to business customers as set forth in § 14 BGB.

(^h) Operating hours quoted as read from the counters, errors excepted.

Date printed: 11.05.2024