



DUESSEL-STAPLER

DUESSEL-STAPLER Helmuth Poensgen/strong>
Owner: Helmuth Poensgen
An der Leimkuhle 19
40625 Dusseldorf
Germany

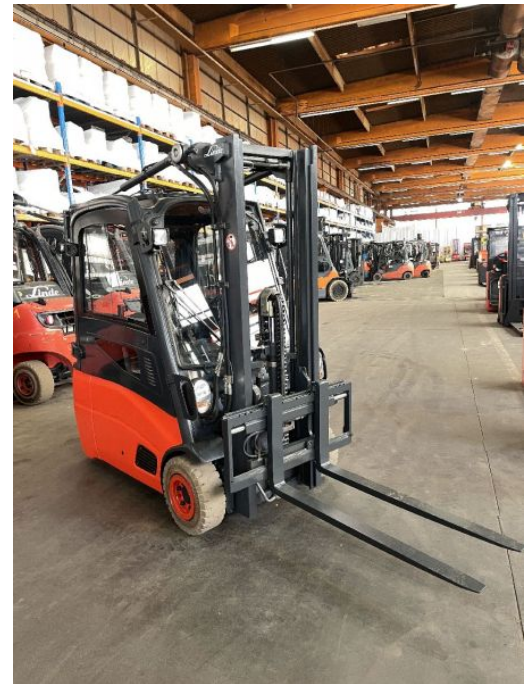
Phone: +49 1522 9858711
Fax: +49 211 54 47 35 92

Email: info@duessel-stapler.de
Internet: duessel-stapler.de

Linde - E16L - 01 - 1,6T Containerf/Duplex/HH3.140 mm

Preis auf
Anfrage

Offer Nr.:	HPM0508
Manufacturer:	Linde
Model:	E16L - 01
YoC:	2013
Serienr.:	... D02140
Operating Hours ^h :	3,200 h
Lifting capacity:	1,600 kg
Lifting height:	3,140 mm
Free lift:	1,600 mm
Construction height:	2,100 mm
Forks:	Länge 1.200 mm
Engine type:	Electric
Type of construction:	Electric 3-wheel
Mast type:	Duplex
Attachments:	Sideshifts
Additional equipment:	3rd valve, Weiße Reifen, Spotlight rear, Spotlight front, Heater, Weatherproof cabin
Technical Condition:	excellent
Condition (visual):	excellent
UVV (Technical Inspection):	current
Tyres:	Solid
Battery:	Bj. 2020 48 Volt 690 Ah
Dead weight:	3,375 kg



Ready to use. Shipping can be arranged at your request. Sold as seen without any warranty. Please make an arrangement for evaluation prior to order.

* All prices are quoted net of the statutory value-added tax from our warehouse in Duesseldorf, if not described otherwise. Errors and omissions excepted. All items subject to prior sale. Offer and sales exclusively to business customers as set forth in § 14 BGB.

(^h) Operating hours quoted as read from the counters, errors excepted.

Date printed: 09.05.2025