



DUESSEL-STAPLER

DUESSEL-STAPLER Helmuth Poensgen/strong>
Owner: Helmuth Poensgen
An der Leimkuhle 19
40625 Dusseldorf
Germany

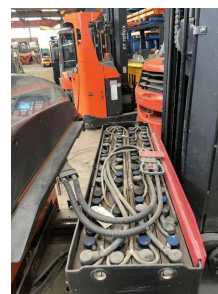
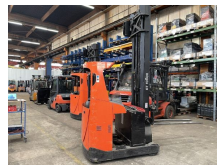
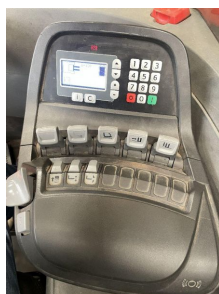
Phone: +49 1522 9858711
Fax: +49 211 54 47 35 92

Email: info@duessel-stapler.de
Internet: duessel-stapler.de

BT - RRE 160

Preis auf
Anfrage

Offer Nr.:	HPM0001
Manufacturer:	BT
Model:	RRE 160
YoC:	2015
Serienr.:	... 387825
Operating Hours ^h :	7,785 h
Lifting capacity:	1,600 kg
Lifting height:	9,000 mm
Free lift:	2,000 mm
Construction height:	3,750 mm
Forks:	Länge 1.200 mm (Ausschub Gabeln 2.000mm)
Engine type:	Electric
Type of construction:	Reach stacker
Mast type:	Triplex
Attachments:	Sideshifts
Additional equipment:	3rd valve, 4th valve, 360° light
Technical Condition:	excellent
Condition (visual):	good
UVV (Technical Inspection):	current
Tyres:	Polyurethane
Battery:	Bj. 2015 48 Volt 620 Ah
Dead weight:	3,875 kg



Shubmast.1,6t/Triplex9.000mmHH/3+4Ventil/Gabel Ausschub/Gewicht Höhen Anzeige

Ready to use. Shipping can be arranged at your request. Sold as seen without any warranty. Please make an arrangement for evaluation prior to order.

* All prices are quoted net of the statutory value-added tax from our warehouse in Duesseldorf, if not described otherwise. Errors and omissions excepted. All items subject to prior sale. Offer and sales exclusively to business customers as set forth in § 14 BGB.

(^h) Operating hours quoted as read from the counters, errors excepted.

Date printed: 13.09.2025