



# DUESSEL-STAPLER

DUESSEL-STAPLER Helmuth Poensgen/strong>  
Owner: Helmuth Poensgen  
An der Leimkuhle 19  
40625 Dusseldorf  
Germany

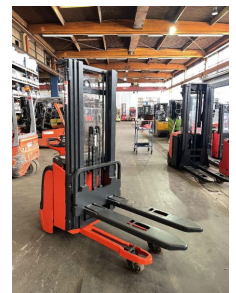
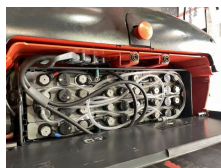
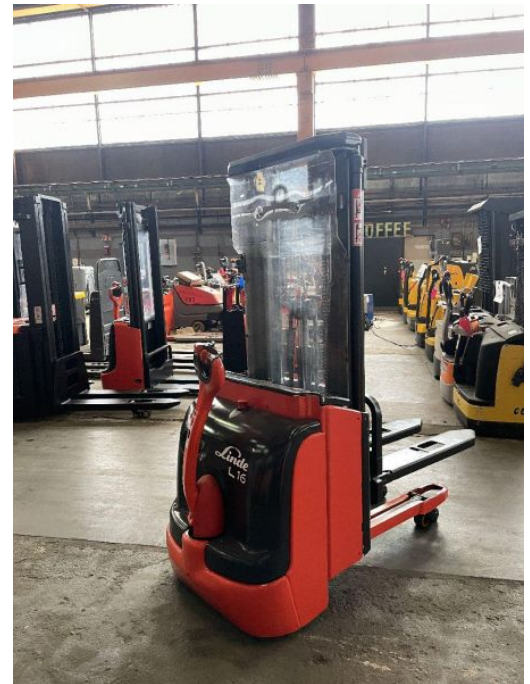
Phone: +49 1522 9858711  
Fax: +49 211 54 47 35 92

Email: [info@duessel-stapler.de](mailto:info@duessel-stapler.de)  
Internet: [duessel-stapler.de](http://duessel-stapler.de)

## Linde - L16 I - 1,6T/Containerf/Triplex/Servo/Initialhub

Preis auf  
Anfrage

|                                |                                  |
|--------------------------------|----------------------------------|
| Offer Nr.:                     | HPM0514                          |
| Manufacturer:                  | Linde                            |
| Model:                         | L16 I                            |
| YoC:                           | 2009                             |
| Serienr.:                      | ... 202064                       |
| Operating Hours <sup>h</sup> : | 3,409 h                          |
| Lifting capacity:              | 1,600 kg                         |
| Lifting height:                | 4,350 mm                         |
| Free lift:                     | 1,400 mm                         |
| Construction height:           | 1,950 mm                         |
| Forks:                         | Länge 1.200 mm                   |
| Engine type:                   | Electric                         |
| Type of construction:          | High-lift pallet truck           |
| Mast type:                     | Triplex                          |
| Additional equipment:          | Initial lift, Integrated charger |
| Technical Condition:           | excellent                        |
| Condition (visual):            | excellent                        |
| UVV (Technical Inspection):    | current                          |
| Tyres:                         | Polyurethane                     |
| Battery:                       | Bj. 2016 24 Volt                 |
| Dead weight:                   | 1,295 kg                         |



Ready to use. Shipping can be arranged at your request. Sold as seen without any warranty. Please make an arrangement for evaluation prior to order.

\* All prices are quoted net of the statutory value-added tax from our warehouse in Duesseldorf, if not described otherwise. Errors and omissions excepted. All items subject to prior sale. Offer and sales exclusively to business customers as set forth in § 14 BGB.

(<sup>h</sup>) Operating hours quoted as read from the counters, errors excepted.

Date printed: 25.06.2025