



DUESSEL-STAPLER

DUESSEL-STAPLER Helmuth Poensgen e.K.

Owner: Helmuth Poensgen

An der Leimkuhle 19

40625 Dusseldorf

Germany

Phone: +49 1522 9858711

Fax: +49 211 54 47 35 92

Email: info@duessel-stapler.de

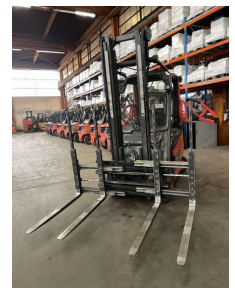
Internet: duessel-stapler.de

Linde - E25HL - 01/600 - ...

Price: € 16,900.00 *

Statutory VAT (19 %) to be added

Offer Nr.:	HPM0536
Manufacturer:	Linde
Model:	E25HL - 01/600
YoC:	2013
Seriennr.:	... D01323
Operating Hours^h:	8,072 h
Lifting capacity:	2,500 kg
Lifting height:	4,050 mm
Construction height:	2,670 mm
Forks:	Länge 1.150 mm (Palettengabel) Seitenschieber Zinkenversteller Öffnung 1.950 mm
Engine type:	Electric
Type of construction:	Electric 4-wheel
Mast type:	Standard
Attachments:	Sideshifts, Fork positioners
Additional equipment:	3rd valve, Pedal-gesteuert, Blue System, 4th valve, Spotlight rear, Spotlight front, Weatherproof cover
Technical Condition:	excellent
Condition (visual):	good
UVV (Technical Inspection):	not specified
Tyres:	Solid
Battery:	Bj. 2013 80 Volt 690 Ah
Dead weight:	2,950 kg



Ready to use. Shipping can be arranged at your request. Sold as seen without any warranty. Please make an arrangement for evaluation prior to order.

* All prices are quoted net of the statutory value-added tax from our warehouse in Duesseldorf, if not described otherwise.

Errors and omissions excepted. All items subject to prior sale. Offer and sales exclusively to business customers as set forth in § 14 BGB.

(^h) Operating hours quoted as read from the counters, errors excepted.

Date printed: 13.05.2024