



DUESSEL-STAPLER

DUESSEL-STAPLER Helmuth Poensgen/strong>
Owner: Helmuth Poensgen
An der Leimkuhle 19
40625 Dusseldorf
Germany

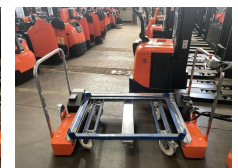
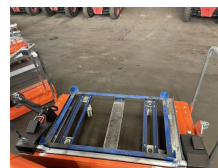
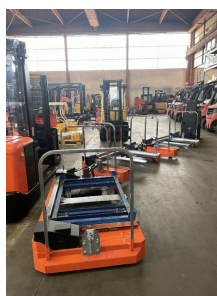
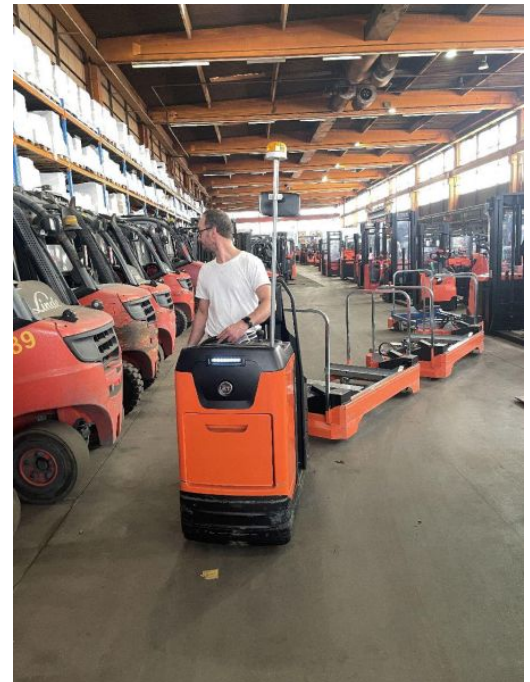
Phone: +49 1522 9858711
Fax: +49 211 54 47 35 92

Email: info@duessel-stapler.de
Internet: duessel-stapler.de

BT - Movit TSE 150-708 - ...

Preis auf
Anfrage

Offer Nr.:	HPM0540
Manufacturer:	BT
Model:	Movit TSE 150-708
YoC:	2016
Seriennr.:	... 165708
Lifting capacity:	1,000 kg
Construction height:	1,650 mm
Engine type:	Electric
Type of construction:	Platform truck, electric
Mast type:	None
Technical Condition:	excellent
Condition (visual):	excellent
UVV (Technical Inspection):	not specified
Tyres:	Polyurethane
Battery:	Bj. 2016 24 Volt 76.106 V/Ah
Dead weight:	450 kg



Ready to use. Shipping can be arranged at your request. Sold as seen without any warranty. Please make an arrangement for evaluation prior to order.

* All prices are quoted net of the statutory value-added tax from our warehouse in Duesseldorf, if not described otherwise. Errors and omissions excepted. All items subject to prior sale. Offer and sales exclusively to business customers as set forth in § 14 BGB.

(^h) Operating hours quoted as read from the counters, errors excepted.

Date printed: 09.04.2026