



DUESSEL-STAPLER

DUESSEL-STAPLER Helmuth Poensgen/strong>
Owner: Helmuth Poensgen
An der Leimkuhle 19
40625 Dusseldorf
Germany

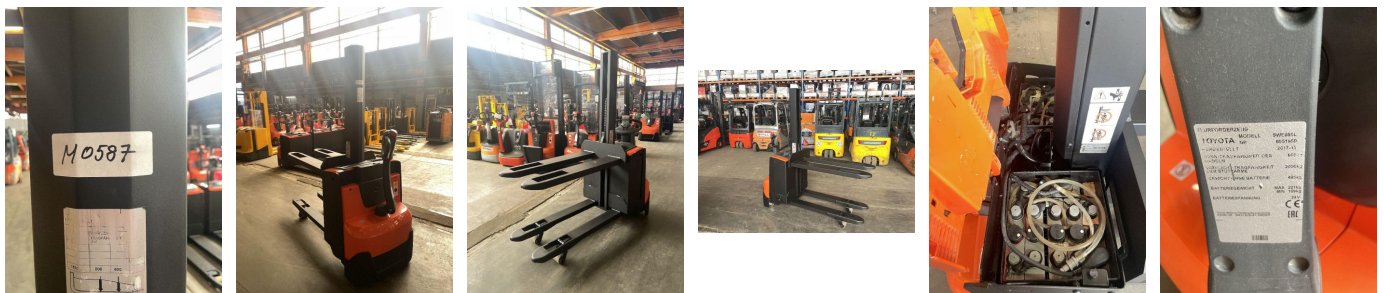
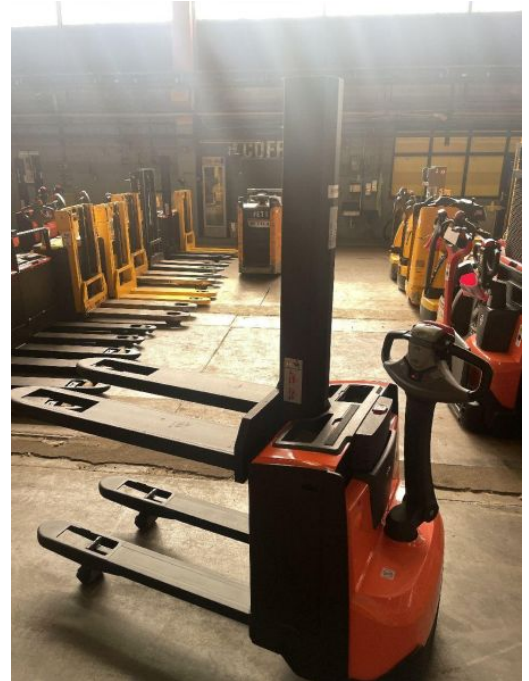
Phone: +49 1522 9858711
Fax: +49 211 54 47 35 92

Email: info@duessel-stapler.de
Internet: duessel-stapler.de

BT - SWE 080 L

Preis auf
Anfrage

Offer Nr.:	HPM0587
Manufacturer:	BT
Model:	SWE 080 L
YoC:	2017
Serienr.:	... 551969
Operating Hours ^h :	3,087 h
Lifting capacity:	800 kg
Lifting height:	1,590 mm
Construction height:	1,870 mm
Forks:	Länge 1.150 mm
Engine type:	Electric
Type of construction:	High-lift pallet truck
Mast type:	Other
Additional equipment:	Initial lift
Technical Condition:	good
Condition (visual):	excellent
UVV (Technical Inspection):	current
Tyres:	Polyurethane
Battery:	BJ. 2017 24 Volt 225 Ah
Dead weight:	720 kg



Ready to use. Shipping can be arranged at your request. Sold as seen without any warranty. Please make an arrangement for evaluation prior to order.

* All prices are quoted net of the statutory value-added tax from our warehouse in Duesseldorf, if not described otherwise.
Errors and omissions excepted. All items subject to prior sale. Offer and sales exclusively to business customers as set forth in § 14 BGB.

(^h) Operating hours quoted as read from the counters, errors excepted.

Date printed: 31.08.2025