



DUESSEL-STAPLER

DUESSEL-STAPLER Helmuth Poensgen/strong>
Owner: Helmuth Poensgen
An der Leimkuhle 19
40625 Dusseldorf
Germany

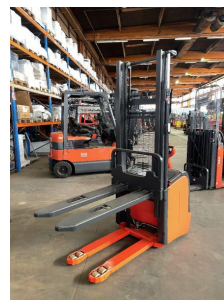
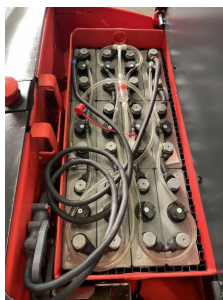
Phone: +49 1522 9858711
Fax: +49 211 54 47 35 92

Email: info@duessel-stapler.de
Internet: duessel-stapler.de

Linde - L 14 - 1,4t/Servo/HH 3.030mm

Preis auf
Anfrage

Offer Nr.:	HPK0347
Manufacturer:	Linde
Model:	L 14
YoC:	2012
Serienr.:	... C04487
Operating Hours ^h :	3,317 h
Lifting capacity:	1,400 kg
Lifting height:	3,030 mm
Construction height:	1,950 mm
Forks:	Länge 1.200 mm
Engine type:	Electric
Type of construction:	High-lift pallet truck
Mast type:	Standard
Additional equipment:	Servo
Technical Condition:	excellent
Condition (visual):	excellent
UVV (Technical Inspection):	current
Tyres:	Polyurethane
Battery:	Bj. 10.2010 24 Volt 375 Ah
Dead weight:	1,275 kg



Ready to use. Shipping can be arranged at your request. Sold as seen without any warranty. Please make an arrangement for evaluation prior to order.

* All prices are quoted net of the statutory value-added tax from our warehouse in Duesseldorf, if not described otherwise. Errors and omissions excepted. All items subject to prior sale. Offer and sales exclusively to business customers as set forth in § 14 BGB.

(^h) Operating hours quoted as read from the counters, errors excepted.

Date printed: 30.07.2025