



DUESSEL-STAPLER Helmuth Poensgen/strong>  
Owner: Helmuth Poensgen  
An der Leimkuhle 19  
40625 Dusseldorf  
Germany

# DUESSEL-STAPLER

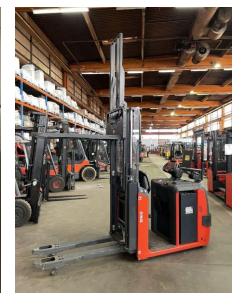
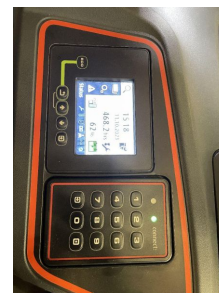
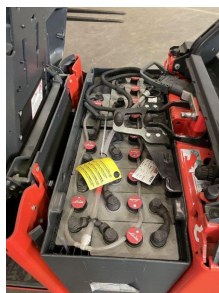
Phone: +49 1522 9858711  
Fax: +49 211 54 47 35 92

Email: [info@duessel-stapler.de](mailto:info@duessel-stapler.de)  
Internet: [duessel-stapler.de](http://duessel-stapler.de)

## Linde - N 20 D - 2t/Mitgeher/468Std/Initialhub

Preis auf  
Anfrage

<b>Offer Nr.:</b>	HPR0041
<b>Manufacturer:</b>	Linde
<b>Model:</b>	N 20 D
<b>YoC:</b>	2019
<b>Serienr.:</b>	... V00002
<b>Operating Hours<sup>h</sup>:</b>	468 h
<b>Lifting capacity:</b>	2,000 kg
<b>Lifting height:</b>	1,780 mm
<b>Construction height:</b>	2,180 mm
<b>Forks:</b>	Länge 1.200 mm
<b>Engine type:</b>	Electric
<b>Type of construction:</b>	Medium-level order picker
<b>Mast type:</b>	Standard
<b>Additional equipment:</b>	Servo, Blue System, Initial lift
<b>Technical Condition:</b>	like new
<b>Condition (visual):</b>	like new
<b>UVV (Technical Inspection):</b>	current
<b>Tyres:</b>	Polyurethane
<b>Battery:</b>	Bj. 2019 24 Volt 620 Ah
<b>Dead weight:</b>	1,795 kg



Ready to use. Shipping can be arranged at your request. Sold as seen without any warranty. Please make an arrangement for evaluation prior to order.

\* All prices are quoted net of the statutory value-added tax from our warehouse in Dusseldorf, if not described otherwise. Errors and omissions excepted. All items subject to prior sale. Offer and sales exclusively to business customers as set forth in § 14 BGB.

(<sup>h</sup>) Operating hours quoted as read from the counters, errors excepted.

Date printed: 13.03.2025