



DUESSEL-STAPLER

DUESSEL-STAPLER Helmuth Poensgen/strong>
Owner: Helmuth Poensgen
An der Leimkuhle 19
40625 Dusseldorf
Germany

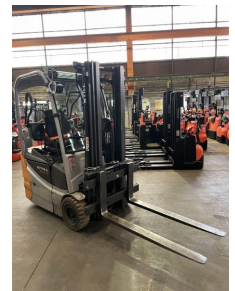
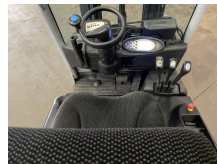
Phone: +49 1522 9858711
Fax: +49 211 54 47 35 92

Email: info@duessel-stapler.de
Internet: duessel-stapler.de

Still - RX 50-15 - 1,5t/Triplex4.650HH/Containerf.

Preis auf
Anfrage

| | |
|--------------------------------|--|
| Offer Nr.: | HPR0058 |
| Manufacturer: | Still |
| Model: | RX 50-15 |
| YoC: | 2018 |
| Seriennr.: | ... 300295 |
| Operating Hours ^h : | 4,762 h |
| Lifting capacity: | 1,500 kg |
| Lifting height: | 4,650 mm |
| Free lift: | 1,500 mm |
| Construction height: | 2,040 mm |
| Forks: | Länge 1.200 mm |
| Engine type: | Electric |
| Type of construction: | Electric 3-wheel |
| Mast type: | Triplex |
| Attachments: | Sideshifts |
| Additional equipment: | 3rd valve, Weiße Reifen, Spotlight rear, Spotlight front |
| Technical Condition: | good |
| Condition (visual): | good |
| UVV (Technical Inspection): | current |
| Tyres: | Solid |
| Battery: | BJ.12- 2014 24 Volt 1000 Ah |
| Dead weight: | 2,700 kg |



Ready to use. Shipping can be arranged at your request. Sold as seen without any warranty. Please make an arrangement for evaluation prior to order.

* All prices are quoted net of the statutory value-added tax from our warehouse in Duesseldorf, if not described otherwise. Errors and omissions excepted. All items subject to prior sale. Offer and sales exclusively to business customers as set forth in § 14 BGB.

(^h) Operating hours quoted as read from the counters, errors excepted.

Date printed: 31.08.2025