



DUESSEL-STAPLER

DUESSEL-STAPLER Helmuth Poensgen/strong>
Owner: Helmuth Poensgen
An der Leimkuhle 19
40625 Dusseldorf
Germany

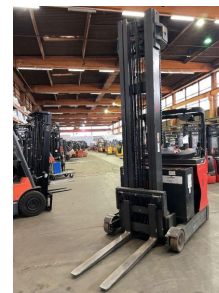
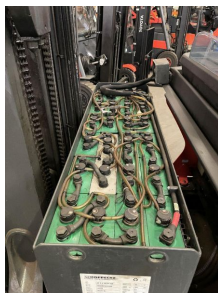
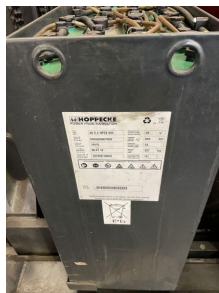
Phone: +49 1522 9858711
Fax: +49 211 54 47 35 92

Email: info@duessel-stapler.de
Internet: duessel-stapler.de

Linde - R 16 HD - 01

Preis auf
Anfrage

Offer Nr.:	HPR0051
Manufacturer:	Linde
Model:	R 16 HD - 01
YoC:	2016
Serienr.:	... G00249
Operating Hours ^h :	11,000 h
Lifting capacity:	1,600 kg
Lifting height:	8,300 mm
Free lift:	2,300 mm
Construction height:	3,430 mm
Forks:	Länge 1.200 mm
Engine type:	Electric
Type of construction:	Reach stacker
Mast type:	Triplex
Additional equipment:	3rd valve, Spotlight rear, Spotlight front
Technical Condition:	fair
Condition (visual):	fair
UVV (Technical Inspection):	not specified
Tyres:	Polyurethane
Battery:	Bj. 2016 48 Volt 620 Ah
Dead weight:	3,800 kg



Ready to use. Shipping can be arranged at your request. Sold as seen without any warranty. Please make an arrangement for evaluation prior to order.

* All prices are quoted net of the statutory value-added tax from our warehouse in Duesseldorf, if not described otherwise. Errors and omissions excepted. All items subject to prior sale. Offer and sales exclusively to business customers as set forth in § 14 BGB.

(^h) Operating hours quoted as read from the counters, errors excepted.

Date printed: 31.07.2025