



DUESSEL-STAPLER

DUESSEL-STAPLER Helmuth Poensgen/strong>
Owner: Helmuth Poensgen
An der Leimkuhle 19
40625 Dusseldorf
Germany

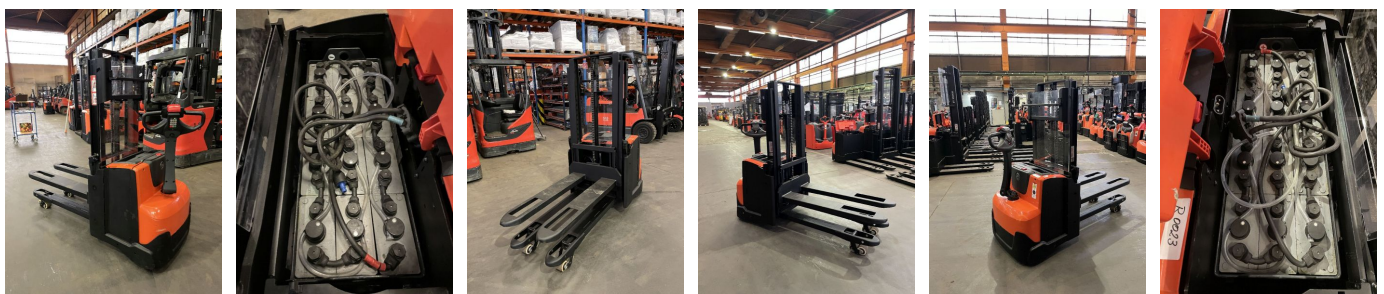
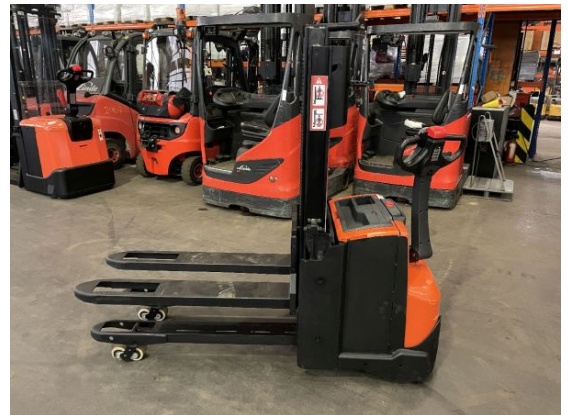
Phone: +49 1522 9858711
Fax: +49 211 54 47 35 92

Email: info@duessel-stapler.de
Internet: duessel-stapler.de

BT - SWE 200 D

Preis auf
Anfrage

| | |
|--------------------------------|-------------------------|
| Offer Nr.: | HPR0023 |
| Manufacturer: | BT |
| Model: | SWE 200 D |
| YoC: | 2018 |
| Seriennr.: | ... 436925 |
| Operating Hours ^h : | 6,954 h |
| Lifting capacity: | 1,000 kg |
| Lifting height: | 2,100 mm |
| Construction height: | 1,580 mm |
| Forks: | Länge 1.150 mm |
| Engine type: | Electric |
| Type of construction: | High-lift pallet truck |
| Mast type: | Standard |
| Additional equipment: | Initial lift |
| Technical Condition: | good |
| Condition (visual): | good |
| UVV (Technical Inspection): | current |
| Tyres: | Polyurethane |
| Battery: | Bj. 2018 24 Volt 275 Ah |
| Dead weight: | 895 kg |



Ready to use. Shipping can be arranged at your request. Sold as seen without any warranty. Please make an arrangement for evaluation prior to order.

* All prices are quoted net of the statutory value-added tax from our warehouse in Duesseldorf, if not described otherwise. Errors and omissions excepted. All items subject to prior sale. Offer and sales exclusively to business customers as set forth in § 14 BGB.

(^h) Operating hours quoted as read from the counters, errors excepted.

Date printed: 25.06.2025