



DUESSEL-STAPLER

DUESSEL-STAPLER Helmuth Poensgen/strong>
Owner: Helmuth Poensgen
An der Leimkuhle 19
40625 Dusseldorf
Germany

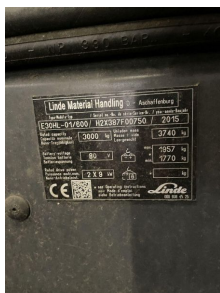
Phone: +49 1522 9858711
Fax: +49 211 54 47 35 92

Email: info@duessel-stapler.de
Internet: duessel-stapler.de

Linde - E 30 HL-01-/600 - ...

Preis auf
Anfrage

Offer Nr.:	HPR0072
Manufacturer:	Linde
Model:	E 30 HL-01-/600
YoC:	2015
Serienr.:	... F00750
Operating Hours ^h :	11,464 h
Lifting capacity:	3,000 kg
Lifting height:	3,680 mm
Construction height:	2,470 mm
Forks:	Länge 1.600 mm
Engine type:	Electric
Type of construction:	Electric 4-wheel
Mast type:	Standard
Attachments:	Sideshifts, Fork positioners
Additional equipment:	3rd valve, 4th valve, Spotlight rear, Spotlight front, Weatherproof cover, Heater, Scales
Technical Condition:	fair
Condition (visual):	fair
UVV (Technical Inspection):	not specified
Tyres:	Solid
Battery:	Bj. 2022 80 Volt 775 Ah
Dead weight:	5,797 kg



Ready to use. Shipping can be arranged at your request. Sold as seen without any warranty. Please make an arrangement for evaluation prior to order.

* All prices are quoted net of the statutory value-added tax from our warehouse in Duesseldorf, if not described otherwise. Errors and omissions excepted. All items subject to prior sale. Offer and sales exclusively to business customers as set forth in § 14 BGB.

(^h) Operating hours quoted as read from the counters, errors excepted.

Date printed: 31.08.2025