



# DUESSEL-STAPLER

DUESSEL-STAPLER Helmuth Poensgen/strong>  
Owner: Helmuth Poensgen  
An der Leimkuhle 19  
40625 Dusseldorf  
Germany

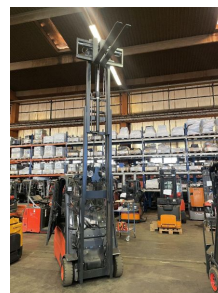
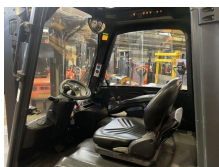
Phone: +49 1522 9858711  
Fax: +49 211 54 47 35 92

Email: [info@duessel-stapler.de](mailto:info@duessel-stapler.de)  
Internet: [duessel-stapler.de](http://duessel-stapler.de)

## Linde - E16L - 01 - ...

Preis auf  
Anfrage

Offer Nr.:	HPRG0091
Manufacturer:	Linde
Model:	E16L - 01
YoC:	2013
Serienr.:	... D05624
Operating Hours <sup>h</sup> :	7,499 h
Lifting capacity:	1,600 kg
Lifting height:	4,120 mm
Free lift:	1,400 mm
Construction height:	1,950 mm
Forks:	Länge 1.200 MM
Engine type:	Electric
Type of construction:	Electric 3-wheel
Mast type:	Triplex
Attachments:	Sideshifts
Additional equipment:	3rd valve, Spotlight rear, Spotlight front, Heater, Weatherproof cabin
Technical Condition:	excellent
Condition (visual):	excellent
UVV (Technical Inspection):	current
Tyres:	Solid
Battery:	BJ. 2013 48 Volt 690 Ah
Dead weight:	3,425 kg



Ready to use. Shipping can be arranged at your request. Sold as seen without any warranty. Please make an arrangement for evaluation prior to order.

\* All prices are quoted net of the statutory value-added tax from our warehouse in Duesseldorf, if not described otherwise. Errors and omissions excepted. All items subject to prior sale. Offer and sales exclusively to business customers as set forth in § 14 BGB.

(<sup>h</sup>) Operating hours quoted as read from the counters, errors excepted.

Date printed: 31.08.2025