



DUESSEL-STAPLER

DUESSEL-STAPLER Helmuth Poensgen/strong>
Owner: Helmuth Poensgen
An der Leimkuhle 19
40625 Dusseldorf
Germany

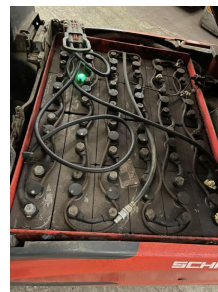
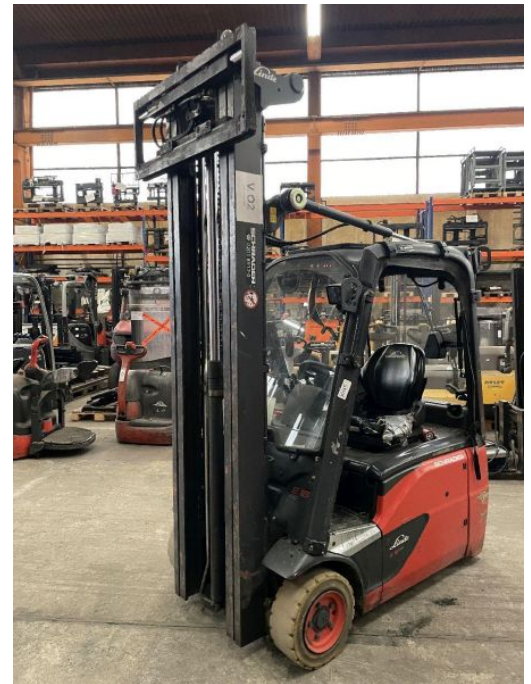
Phone: +49 1522 9858711
Fax: +49 211 54 47 35 92

Email: info@duessel-stapler.de
Internet: duessel-stapler.de

Linde - E16-02 - 1,6t/Triplex6.000HH/Freihub

Preis auf
Anfrage

Offer Nr.:	HPR0115
Manufacturer:	Linde
Model:	E16-02
YoC:	2014
Serienr.:	... E52976
Operating Hours ^h :	9,965 h
Lifting capacity:	1,600 kg
Lifting height:	6,000 mm
Free lift:	2,000 mm
Construction height:	2,640 mm
Forks:	Länge 1.200 mm
Engine type:	Electric
Type of construction:	Electric 3-wheel
Mast type:	Triplex
Attachments:	Sideshifts
Additional equipment:	3rd valve, Weiße Reifen, Spotlight rear, Spotlight front, Front pane, Weatherproof cover, Integrated charger
Technical Condition:	fair
Condition (visual):	like new
UVV (Technical Inspection):	not specified
Tyres:	Solid
Battery:	Bj. 2014 48 Volt 625 AH
Dead weight:	3,655 kg



Ready to use. Shipping can be arranged at your request. Sold as seen without any warranty. Please make an arrangement for evaluation prior to order.

* All prices are quoted net of the statutory value-added tax from our warehouse in Duesseldorf, if not described otherwise. Errors and omissions excepted. All items subject to prior sale. Offer and sales exclusively to business customers as set forth in § 14 BGB.

(^h) Operating hours quoted as read from the counters, errors excepted.

Date printed: 30.07.2025