



DUESSEL-STAPLER

DUESSEL-STAPLER Helmuth Poensgen/strong>
Owner: Helmuth Poensgen
An der Leimkuhle 19
40625 Dusseldorf
Germany

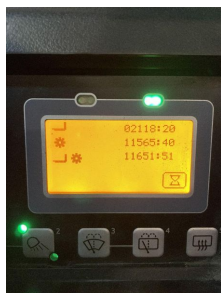
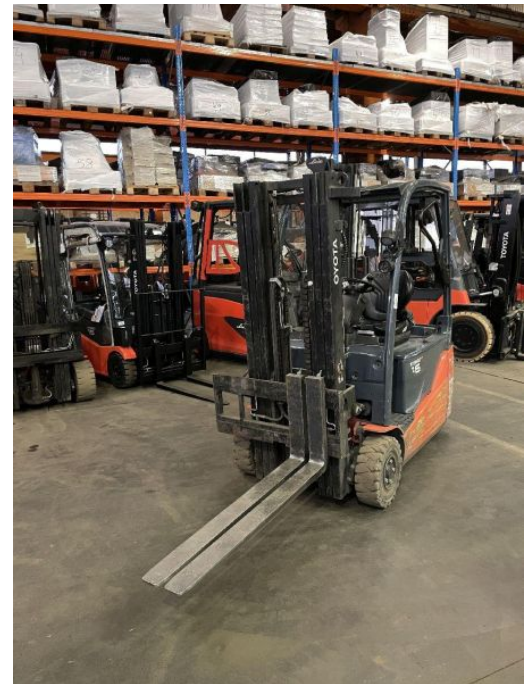
Phone: +49 1522 9858711
Fax: +49 211 54 47 35 92

Email: info@duessel-stapler.de
Internet: duessel-stapler.de

Toyota - 8FBE16T - Containerfähig/Lithium Batterie

Preis auf
Anfrage

Offer Nr.:	HPR0102
Manufacturer:	Toyota
Model:	8FBE16T
YoC:	2017
Serienr.:	... 12207
Operating Hours^h:	11,651 h
Lifting capacity:	1,600 kg
Lifting height:	4,280 mm
Free lift:	1,400 mm
Construction height:	2,010 mm
Forks:	Länge 1.200 mm
Engine type:	Electric
Type of construction:	Electric 3-wheel
Mast type:	Triplex
Attachments:	Sideshifts
Additional equipment:	3rd valve, Weiße Reifen, Spotlight rear, Spotlight front
Technical Condition:	good
Condition (visual):	good
UVV (Technical Inspection):	not specified
Tyres:	Polyurethane
Battery:	Lithium-Ionen-Akkumulator
Dead weight:	2,950 kg



Ready to use. Shipping can be arranged at your request. Sold as seen without any warranty. Please make an arrangement for evaluation prior to order.

* All prices are quoted net of the statutory value-added tax from our warehouse in Duesseldorf, if not described otherwise. Errors and omissions excepted. All items subject to prior sale. Offer and sales exclusively to business customers as set forth in § 14 BGB.

(^h) Operating hours quoted as read from the counters, errors excepted.

Date printed: 25.06.2026