



DUESSEL-STAPLER

DUESSEL-STAPLER Helmuth Poensgen/strong>
Owner: Helmuth Poensgen
An der Leimkuhle 19
40625 Dusseldorf
Germany

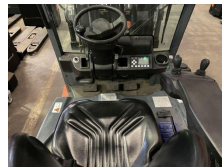
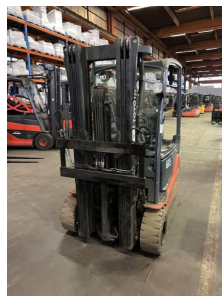
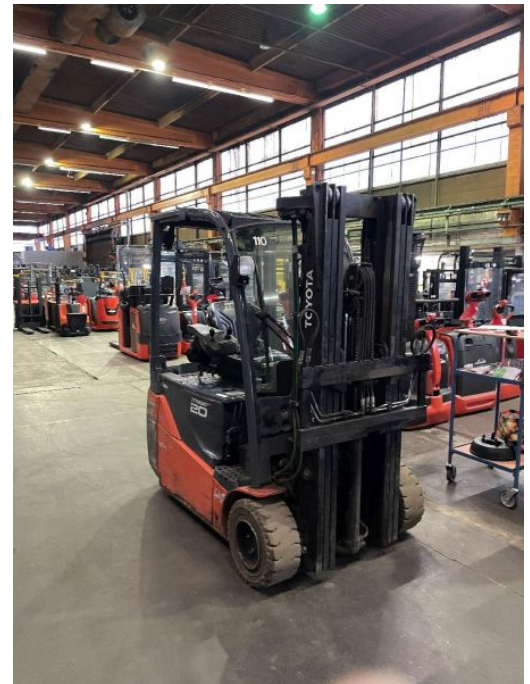
Phone: +49 1522 9858711
Fax: +49 211 54 47 35 92

Email: info@duessel-stapler.de
Internet: duessel-stapler.de

Toyota - 8FBE20T

Preis auf
Anfrage

Offer Nr.:	HPR0104
Manufacturer:	Toyota
Model:	8FBE20T
YoC:	2016
Seriennr.:	... 10734
Operating Hours^h:	13,000 h
Lifting capacity:	2,000 kg
Lifting height:	4,540 mm
Free lift:	1,500 mm
Construction height:	2,030 mm
Forks:	Länge 1.200 mm
Engine type:	Electric
Type of construction:	Electric 3-wheel
Mast type:	Triplex
Additional equipment:	3rd valve, Pedal-gesteuert, 4th valve, Spotlight rear, Spotlight front, Front pane, Weatherproof cover
Technical Condition:	good
Condition (visual):	good
UVV (Technical Inspection):	not specified
Tyres:	Solid
Battery:	Bj. 2018 48Volt 690 Ah
Dead weight:	3,875 kg



Ready to use. Shipping can be arranged at your request. Sold as seen without any warranty. Please make an arrangement for evaluation prior to order.

* All prices are quoted net of the statutory value-added tax from our warehouse in Duesseldorf, if not described otherwise. Errors and omissions excepted. All items subject to prior sale. Offer and sales exclusively to business customers as set forth in § 14 BGB.

(^h) Operating hours quoted as read from the counters, errors excepted.

Date printed: 10.06.2026