



DUESSEL-STAPLER

DUESSEL-STAPLER Helmuth Poensgenf/strong>
Owner: Helmuth Poensgen
An der Leimkuhle 19
40625 Dusseldorf
Germany

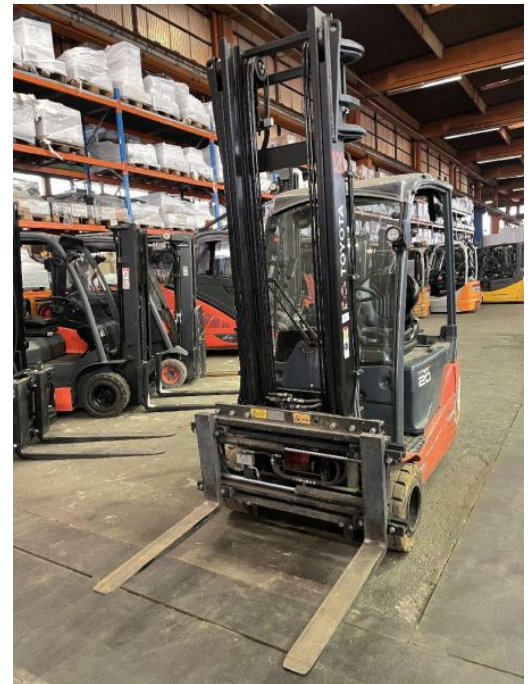
Phone: +49 1522 9858711
Fax: +49 211 54 47 35 92

Email: info@duessel-stapler.de
Internet: duessel-stapler.de

Toyota - 8FBE20T

Preis auf
Anfrage

Offer Nr.:	HPR0105
Manufacturer:	Toyota
Model:	8FBE20T
YoC:	2017
Serienr.:	... 1239
Operating Hours^h:	4,172 h
Lifting capacity:	2,000 kg
Lifting height:	4,000 mm
Construction height:	2,539 mm
Forks:	Länge 800 mm Zinkenversteller Öffnung 1050 mm
Engine type:	Electric
Type of construction:	Electric 3-wheel
Mast type:	Standard
Attachments:	Sideshifts, Fork positioners
Additional equipment:	3rd valve, 4th valve, Spotlight rear, Spotlight front
Technical Condition:	good
Condition (visual):	good
UVV (Technical Inspection):	not specified
Tyres:	Solid
Battery:	Bj. 11-2015 48Volt 690 Ah
Dead weight:	3,744 kg



Ready to use. Shipping can be arranged at your request. Sold as seen without any warranty. Please make an arrangement for evaluation prior to order.

* All prices are quoted net of the statutory value-added tax from our warehouse in Duesseldorf, if not described otherwise. Errors and omissions excepted. All items subject to prior sale. Offer and sales exclusively to business customers as set forth in § 14 BGB.

(^h) Operating hours quoted as read from the counters, errors excepted.

Date printed: 15.04.2026