



DUESSEL-STAPLER

DUESSEL-STAPLER Helmuth Poensgen/strong>
Owner: Helmuth Poensgen
An der Leimkuhle 19
40625 Dusseldorf
Germany

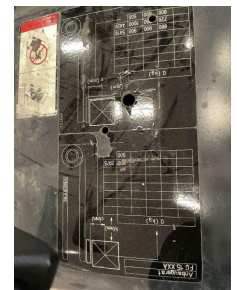
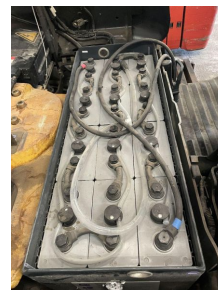
Phone: +49 1522 9858711
Fax: +49 211 54 47 35 92

Email: info@duessel-stapler.de
Internet: duessel-stapler.de

Still - RX50-10 - 3+4 Ventil/Duplex /Promblem Steuerung

Preis auf
Anfrage

| | |
|--------------------------------|--|
| Offer Nr.: | HPHPP0004 |
| Manufacturer: | Still |
| Model: | RX50-10 |
| YoC: | 2008 |
| Seriennr.: | ... 017162 |
| Operating Hours ^h : | 4,000 h |
| Lifting capacity: | 1,000 kg |
| Lifting height: | 3,000 mm |
| Free lift: | 1,600 mm |
| Construction height: | 2,300 mm |
| Forks: | Länge 1.200 mm |
| Fork carriage: | Anbaugerät SS - ZV + 1.200€ / Ladegerät und Gabeln dabei |
| Engine type: | Electric |
| Type of construction: | Electric 3-wheel |
| Mast type: | Triplex |
| Attachments: | Sideshifts, Fork positioners |
| Additional equipment: | 3rd valve, 4th valve |
| Technical Condition: | fair |
| Condition (visual): | good |
| UVV (Technical Inspection): | not specified |
| Tyres: | Solid |
| Battery: | Bj. 2008 24 Volt 650 Ah |
| Dead weight: | 1,245 kg |



Ready to use. Shipping can be arranged at your request. Sold as seen without any warranty. Please make an arrangement for evaluation prior to order.

* All prices are quoted net of the statutory value-added tax from our warehouse in Duesseldorf, if not described otherwise.

Errors and omissions excepted. All items subject to prior sale. Offer and sales exclusively to business customers as set forth in § 14 BGB.

(^h) Operating hours quoted as read from the counters, errors excepted.

Date printed: 24.04.2025