



# DUESSEL-STAPLER

**DUESSEL-STAPLER Helmuth Poensgen e.K.**

Owner: Helmuth Poensgen

An der Leimkuhle 19

40625 Dusseldorf

Germany

**Phone:** +49 1522 9858711

**Fax:** +49 211 54 47 35 92

**Email:** info@duessel-stapler.de

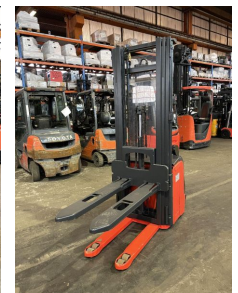
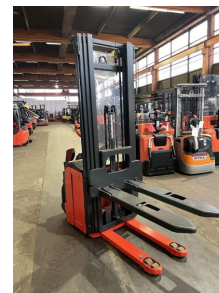
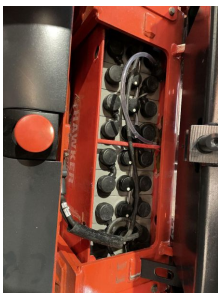
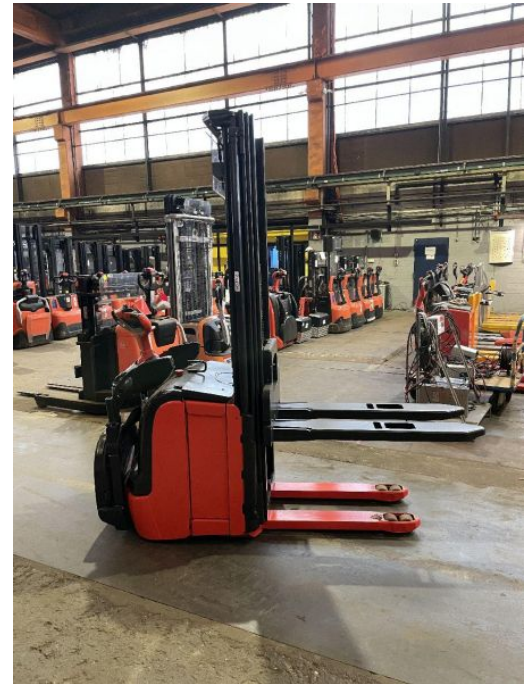
**Internet:** duessel-stapler.de

## Linde - L1AP - 1,4t/HH5.400/Batter.2018/

**Price: € 6,750.00 \***

Statutory VAT (19 %) to be added

<b>Offer Nr.:</b>	HPR0152
<b>Manufacturer:</b>	Linde
<b>Model:</b>	L1AP
<b>YoC:</b>	2014
<b>Seriennr.:</b>	... E01504
<b>Operating Hours<sup>h</sup>:</b>	5,504 h
<b>Lifting capacity:</b>	1,400 kg
<b>Lifting height:</b>	5,400 mm
<b>Free lift:</b>	1,850 mm
<b>Construction height:</b>	2,260 mm
<b>Forks:</b>	Länge 1.200 mm
<b>Fork carriage:</b>	Höhenanzeige / Gewichtsanzeige
<b>Engine type:</b>	Electric
<b>Type of construction:</b>	High-lift pallet truck
<b>Mast type:</b>	Triplex
<b>Technical Condition:</b>	excellent
<b>Condition (visual):</b>	good
<b>UVV (Technical Inspection):</b>	current
<b>Tyres:</b>	Polyurethane
<b>Battery:</b>	BJ. 2018 24 Volt 375 Ah
<b>Dead weight:</b>	1,050 kg



Ready to use. Shipping can be arranged at your request. Sold as seen without any warranty. Please make an arrangement for evaluation prior to order.

\* All prices are quoted net of the statutory value-added tax from our warehouse in Duesseldorf, if not described otherwise.

Errors and omissions excepted. All items subject to prior sale. Offer and sales exclusively to business customers as set forth in § 14 BGB.

(<sup>h</sup>) Operating hours quoted as read from the counters, errors excepted.

Date printed: 10.05.2024