



# DUESSEL-STAPLER

DUESSEL-STAPLER Helmuth Poensgen/strong>  
Owner: Helmuth Poensgen  
An der Leimkuhle 19  
40625 Dusseldorf  
Germany

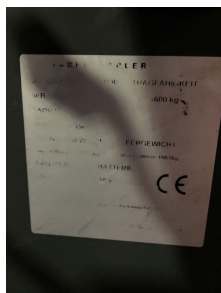
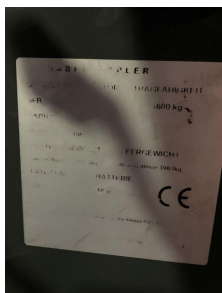
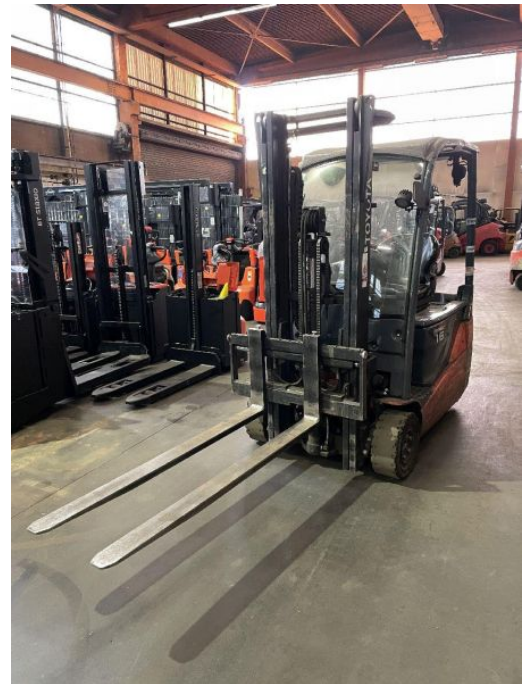
Phone: +49 1522 9858711  
Fax: +49 211 54 47 35 92

Email: [info@duessel-stapler.de](mailto:info@duessel-stapler.de)  
Internet: [duessel-stapler.de](http://duessel-stapler.de)

## Toyota - 8FBE16T

Preis auf  
Anfrage

<b>Offer Nr.:</b>	HPR0155
<b>Manufacturer:</b>	Toyota
<b>Model:</b>	8FBE16T
<b>YoC:</b>	2017
<b>Serienr.:</b>	... 13456
<b>Operating Hours<sup>h</sup>:</b>	15,105 h
<b>Lifting capacity:</b>	1,600 kg
<b>Lifting height:</b>	3,300 mm
<b>Free lift:</b>	1,500 mm
<b>Construction height:</b>	2,100 mm
<b>Forks:</b>	Länge 1.500 mm
<b>Engine type:</b>	Electric
<b>Type of construction:</b>	Electric 4-wheel
<b>Mast type:</b>	Duplex
<b>Attachments:</b>	Sideshifts
<b>Additional equipment:</b>	3rd valve, Spotlight rear, Spotlight front, Front pane
<b>Technical Condition:</b>	fair
<b>Condition (visual):</b>	fair
<b>UVV (Technical Inspection):</b>	not specified
<b>Tyres:</b>	Solid
<b>Battery:</b>	Bj. 2018 48 Volt 600Ah
<b>Dead weight:</b>	2,750 kg



Ready to use. Shipping can be arranged at your request. Sold as seen without any warranty. Please make an arrangement for evaluation prior to order.

\* All prices are quoted net of the statutory value-added tax from our warehouse in Dusseldorf, if not described otherwise. Errors and omissions excepted. All items subject to prior sale. Offer and sales exclusively to business customers as set forth in § 14 BGB.

(<sup>h</sup>) Operating hours quoted as read from the counters, errors excepted.

Date printed: 14.03.2025