



# DUESSEL-STAPLER

DUESSEL-STAPLER Helmuth Poensgen/strong>  
Owner: Helmuth Poensgen  
An der Leimkuhle 19  
40625 Dusseldorf  
Germany

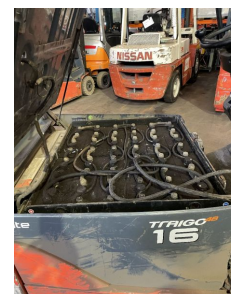
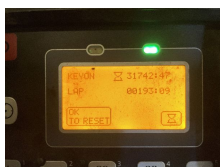
Phone: +49 1522 9858711  
Fax: +49 211 54 47 35 92

Email: [info@duessel-stapler.de](mailto:info@duessel-stapler.de)  
Internet: [duessel-stapler.de](http://duessel-stapler.de)

## Toyota - 8FBE16T

Preis auf  
Anfrage

Offer Nr.:	HPR0157
Manufacturer:	Toyota
Model:	8FBE16T
YoC:	2016
Serienr.:	... 10899
Operating Hours <sup>h</sup> :	31,742 h
Lifting capacity:	1,600 kg
Lifting height:	3,300 mm
Construction height:	2,130 mm
Forks:	Länge 1.200 mm
Engine type:	Electric
Type of construction:	Electric 3-wheel
Mast type:	Standard
Attachments:	Sideshifts
Additional equipment:	3rd valve, Weiße Reifen, Pedal-gesteuert, Spotlight rear, Spotlight front, Front pane
Technical Condition:	fair
Condition (visual):	fair
UVV (Technical Inspection):	not specified
Tyres:	Solid
Battery:	BJ. 2016 48 Volt 600 Ah
Dead weight:	2,750 kg



Ready to use. Shipping can be arranged at your request. Sold as seen without any warranty. Please make an arrangement for evaluation prior to order.

\* All prices are quoted net of the statutory value-added tax from our warehouse in Duesseldorf, if not described otherwise. Errors and omissions excepted. All items subject to prior sale. Offer and sales exclusively to business customers as set forth in § 14 BGB.

(<sup>h</sup>) Operating hours quoted as read from the counters, errors excepted.

Date printed: 02.08.2025