



DUESSEL-STAPLER

DUESSEL-STAPLER Helmuth Poensgen/strong>
Owner: Helmuth Poensgen
An der Leimkuhle 19
40625 Dusseldorf
Germany

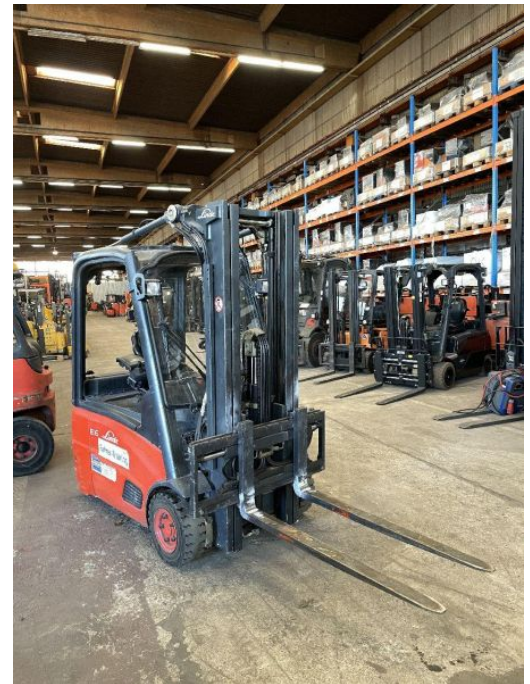
Phone: +49 1522 9858711
Fax: +49 211 54 47 35 92

Email: info@duessel-stapler.de
Internet: duessel-stapler.de

Linde - E16-01 - 1,6t/Containf/Triplex/2.156Std!

Preis auf
Anfrage

Offer Nr.:	HPR0160
Manufacturer:	Linde
Model:	E16-01
YoC:	2006
Serienr.:	... T00351
Operating Hours ^h :	2,156 h
Lifting capacity:	1,600 kg
Lifting height:	4,600 mm
Free lift:	1,400 mm
Construction height:	2,100 mm
Forks:	Länge 1.200 mm
Engine type:	Electric
Type of construction:	Electric 3-wheel
Mast type:	Triplex
Attachments:	Sideshifts
Additional equipment:	3rd valve, Pedal-gesteuert, 4th valve, Spotlight rear, Front pane, Weatherproof cover
Technical Condition:	excellent
Condition (visual):	good
UVV (Technical Inspection):	current
Tyres:	Solid
Battery:	Bj. 2006 48 Volt 900 Ah
Dead weight:	3,410 kg



Ready to use. Shipping can be arranged at your request. Sold as seen without any warranty. Please make an arrangement for evaluation prior to order.

* All prices are quoted net of the statutory value-added tax from our warehouse in Duesseldorf, if not described otherwise. Errors and omissions excepted. All items subject to prior sale. Offer and sales exclusively to business customers as set forth in § 14 BGB.

(^h) Operating hours quoted as read from the counters, errors excepted.

Date printed: 26.07.2025